

SFS

J-Tec

Concealed hinge for aluminium, steel and wood profiles. Unique design, stable, quick to install.

3D



**Design, customisation and capacity,
with extremely fast installation
times.**

**Adaptable to the client's brand,
supplied on request with fixing
elements and milling guides.**



**Ideal for high-design profiles
in aluminium, steel and wood
with concealed rebate.**



J -Tec 3D is a Zinc alloy hinge designed to meet the performance, capacity and durability demands of modern design.

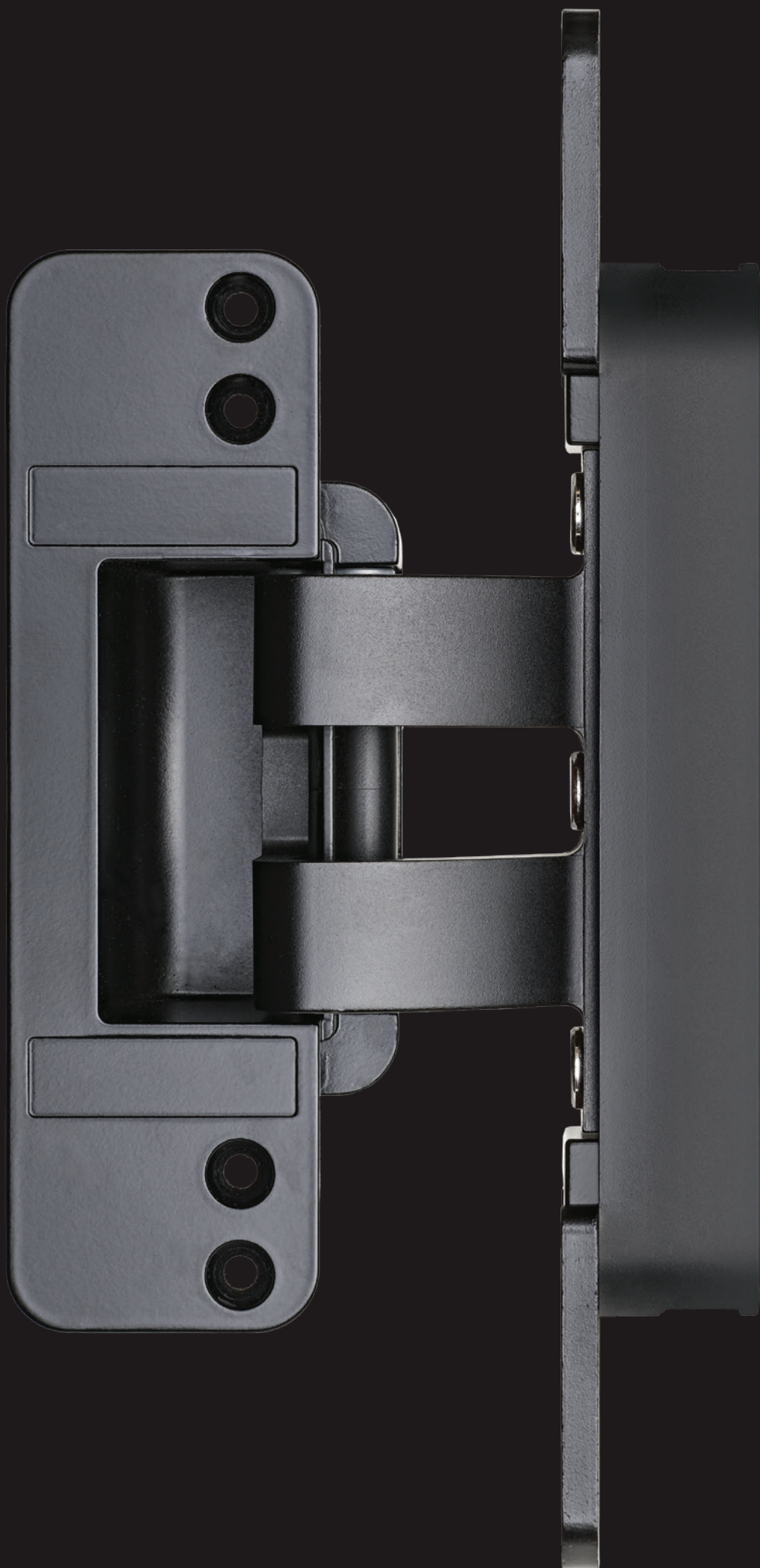
The ideal solution for manufacturers of doors and windows weighing up to 120 kg and with 110° opening for fast installation and 3-dimensional adjustment.

A strong, Zinc alloy single lever arm—the product of SFS expertise—J-Tec 3D allows efficient distribution of the door or window loads.

Ideal for doors and windows in high- design environ- ments



The unique and reliable kinematic mechanism typical of all SFS hinges keeps the doors and windows self-centred and perfectly aligned, ensuring optimal contact that is visually perfect and true to the demands of modern design.



**Multitude of finishes
allow its use in any
setting.**

**J-Tec is pre-assembled,
3D-adjustable, and can
be supplied
with milling guides
on request.**





Versatility, reliability and design are J-Tec 3D's best response to the needs of modern window and door manufacturers. Conforming to major European certifications and passing strict SFS durability testing, with high resistance to corrosion.

The gasket pressure, height and horizontal alignment can easily be adjusted by a single operator using a simple 4 mm Allen key.

Unique design, stable, quick to install and adjust



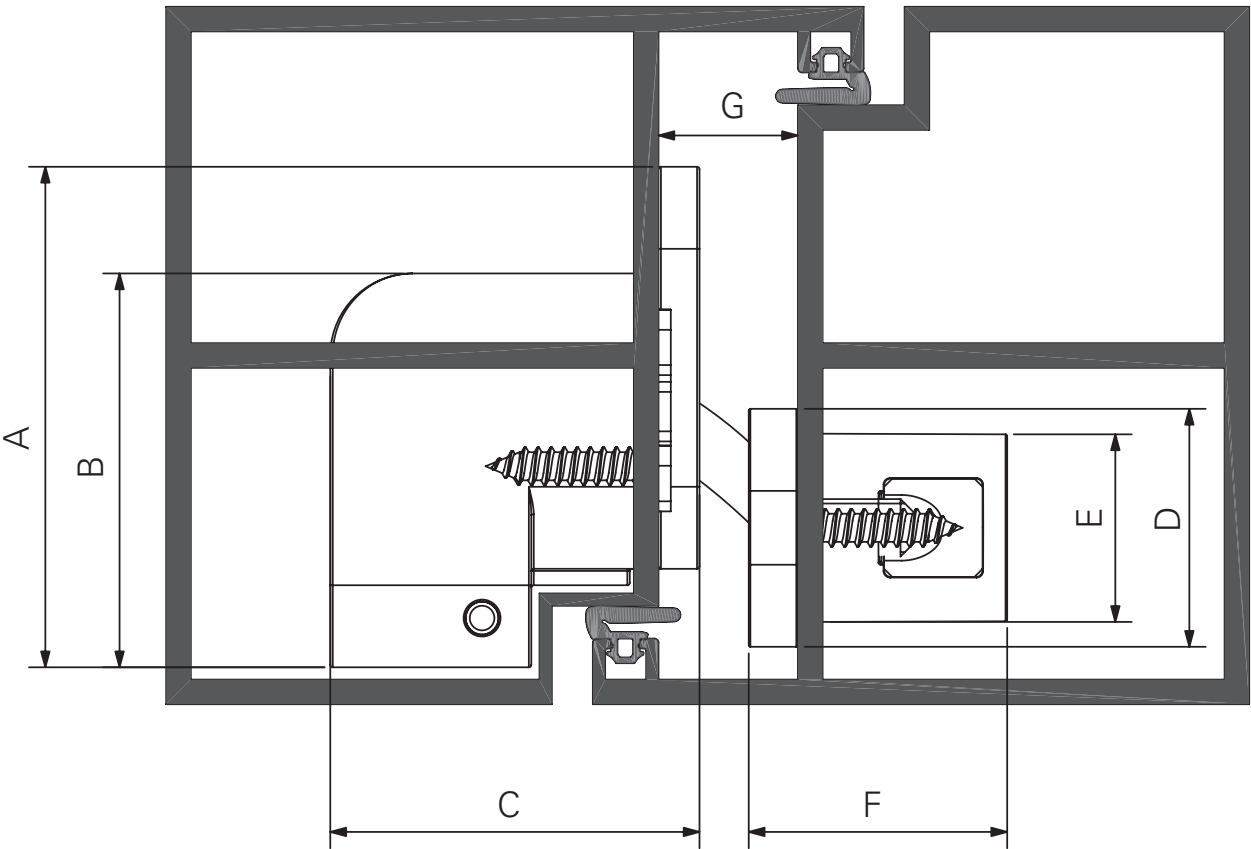
J-Tec 3D is the best solution to reduce installation costs and times since it is supplied pre-assembled and designed to allow simple and fast adjustment.



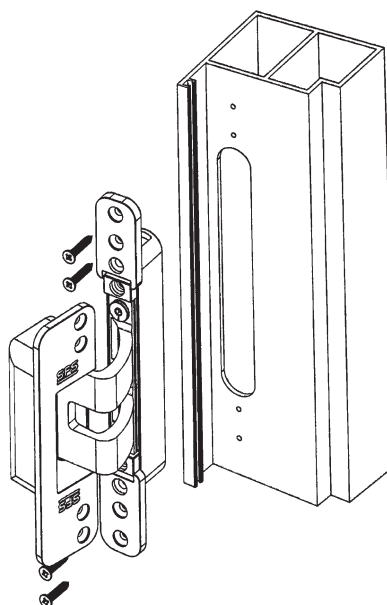
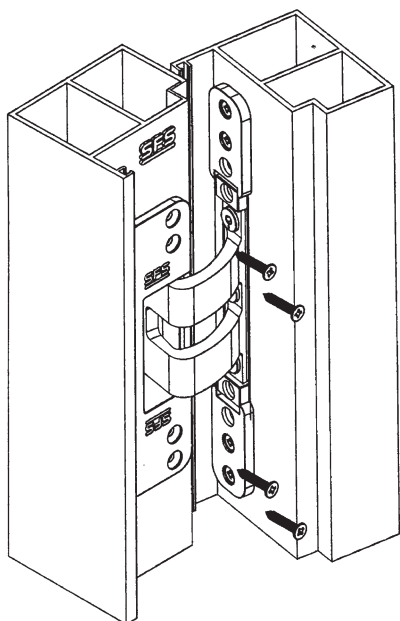
On request, J-Tec 3D can be supplied with SFS fixing elements, special rivets, and milling guides to facilitate installation.

Product description

J-Tec 3D



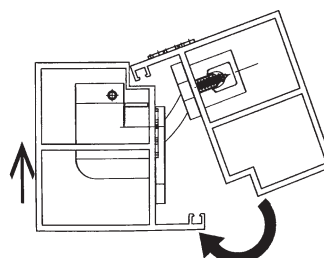
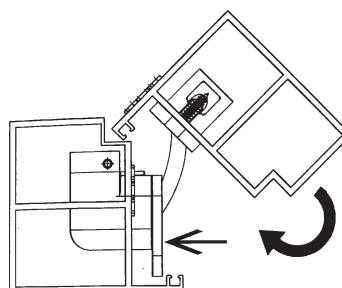
Ref.	J-Tec 3D		Load capacity	J-Tec 3D
A	61*	Hinge height frame side 170mm	2 hinges	120 kg
B	48*	Hinge height sash side 250mm		
C	45*			
D	29	Measurements with * are customisable		
E	23			
F	32	Measurements D, E, F of the door part are currently fixed		
G	17*			



1793361 J-Tec 3D Black prototype 1 pc.

The door opening indicated at 110° may vary depending on the client profile

Door stopper needed





SFS Group Italy S.r.l
Construction division
via Castelfranco Veneto 71
33170 Pordenone

it.info@sfs.com
it.sfs.com