

SFS

A close-up photograph of several adjustable hinges, likely made of stainless steel, arranged diagonally across the frame. The hinges are shown in various states of assembly, with some screws being inserted or removed. The background is a dark, reflective surface that creates a clear reflection of the hinges below them. The lighting is dramatic, highlighting the metallic texture and the precision of the components.

Adjustable Hinges

Index

General information	
4	Our company
6	Characteristics and test
8	CE classification guide
11	Functional test in accordans to RAL standards
Hinges for rebated doors and windows	
14	Self closing system
20	Adjustable hinges Ø 14
21	Adjustable hinges Ø 15
26	Adjustable hinges Ø 20
Hinges for flushfit doors and windows	
32	Self closing system
35	Adjustable hinges Ø 15
37	Adjustable hinges Ø 20
Accessories and jigs	
40	Cover caps
57	Jigs and accessories

Specialists in fasteners and hinges

We are committed to constant improvement and innovation, always in close collaboration with our customers, colleagues, and suppliers. We seek success together.

SFS offers its services and its products with one goal: **the creation of benefits for the customer.**

For our customers, it means having the competence of our employees available when it comes to development and research, as well as production and marketing to continuously improve the services offered

Effort and competence to arrive at convincing solutions: our focus is on quality, starting from the first consultation, passing through development, then production, and finally supply. In SFS, productivity and process control are supported by a powerful infrastructure and organization.

Understanding the customer’s needs is of vital importance to us

For SFS, closeness with the customer is fundamental.

Our vast geographical presence allows us immediate communications and a continuous exchange of information.

This means that specific solutions can be developed without the obstacle of linguistic or cultural barriers.

Our customers can thus benefit from a global strength yet local presence.

We aim to achieve specific solutions for each application to ensure reliable supplies all over the world.

Company Video



Quality management and workplace safety are of vital importance for SFS.

All the requirements of the quality, environmental, and safety management systems have been gathered by SFS in an integrated company management system called BMS, which documents every company procedure.

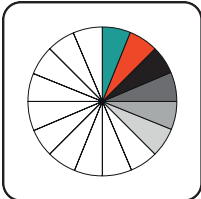
The basis of the SFS company quality management system is the fulfilment of the following international regulations:



- ISO 9001: quality system management requirements
- ISO 14001: environmental protection system management requirements and application procedures
- ISO 45001: health and safety management requirements in the company depending on the sector in which we operate. There are sites that must comply with additional regulations such as:
- IATF 16949: these are special requirements applied to ISO 9001 for the supply of special parts for the automotive sector
- ISO 9100: requirements for organizations working in the aerospace and defence fields
- ISO 13485: requirements for the medical sector
- ISO 17025: general requirements for internal testing and calibration laboratories

Products

Characteristics



Hinges available in different colours

SFS offers a wide range of both galvanic and powder coating finishes. The finishes are resistant to atmospheric agents, and tested according to UNI EN 1670 standards.



Anti-fire resistance

These products are anti-fire tested in accordance to to EN1634-1:2018 standards

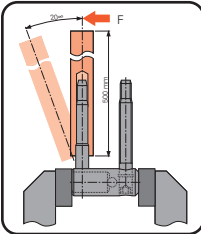


CE marking

The classification of the hinges takes place following functional tests according to EN 1935 in a recognized external institute

Test

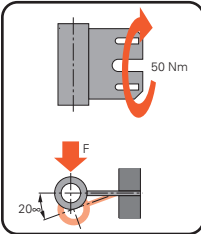
Products



Bolt welding test

All SFS hinges that the stud has been welded to, must comply with the quality requirements described below.

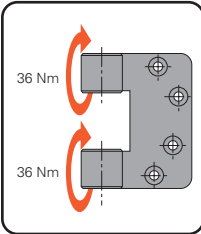
- Test condition:
- Bending of the welded stud by approximately 20°
- Condition to be met:
- The welding must remain intact (without cracks)



Welding test for plates with longitudinal welding

All SFS hinges with a longitudinal welding > 25 mm must comply with the quality requirements described below.

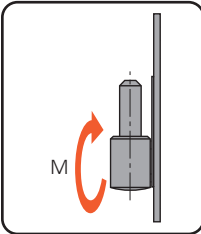
- Test condition:
- Apply a 50 Nm torque to the plate as per the drawing.
- Condition to be met:
- The welding must remain intact (without cracks)



Welding test for plates with spot welding

All SFS hinges with plates for flush fit doors must comply with the quality requirements described below.

- Test condition:
- Lock the plate, apply a 35 Nm torque to the base body as per drawing
- Condition to be met:
- The welding must remain intact (without cracks)



Welding test for fixing plates of hinges for PVC-U applications

All SFS hinges for PVC applications must comply with the quality requirements described below.

- Test condition:
- Lock the fixing plate.
 - Apply a torque to the base body, of:
 - a) 36 Nm (standard)
 - b) 25 Nm for 2 dimensions adjustable hinges

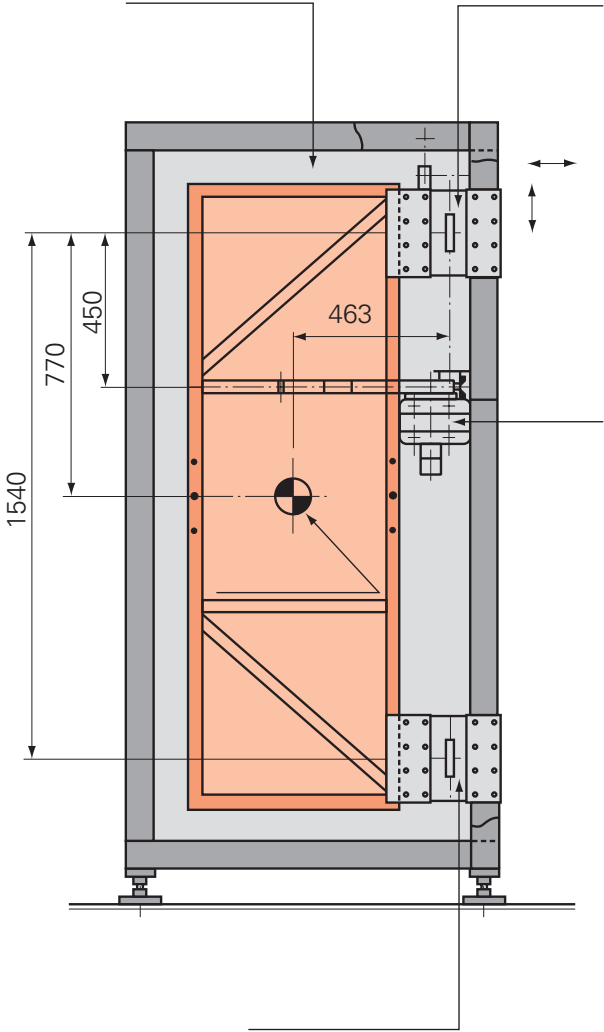
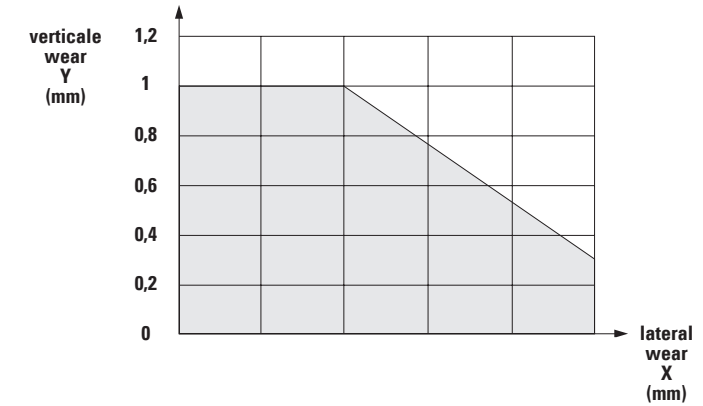
- Condition to be met:
- The welding must remain intact (without cracks)

Functional test according to EN 1935 standard

All SFS hinges subjected to the recommended loads must comply with the conditions established by EN standard 1935.

In addition to the shear strength and static load tests required by the standard, our hinges are subjected to the durability test described below:

- load the hinged test element with the mass required by the hinge class
- measure and record the relative vertical and horizontal distances between the hinge elements and the reference surfaces
- rotate the hinged test element for 20 cycles at $92.5^{\circ} \pm 2.5^{\circ}$
- measure the torque required to start rotation at $0^{\circ} \pm 5^{\circ}$, $30^{\circ} \pm 5^{\circ}$, $60^{\circ} \pm 5^{\circ}$, $90^{\circ} \pm 5^{\circ}$
- The max torque detected must not exceed the following parameters:
 - 2 Nm class 1 - 7
 - 3 Nm class 8 - 11
 - 4 Nm class 12 - 14
- the test must be performed with a frequency of 600 ± 30 cycles/hour with an opening of $92.5 \pm 5^{\circ}$
- after 200,000 cycles, measure the opening torque and the vertical and horizontal relative distances between the hinge elements and the reference surfaces. The extent of side and vertical wear measured as displacement between the reference surfaces must be within the area of the following graph:



Classification EN 1935 of CE certified hinges

Item description	Usage category	Dduration test (cycles)	Door Mass	Fire & smoke resistance	Safety	Corrosion resistance	Anti-burglary protection	Hinge class	page
11R Ø 14	2	7	1	0	1	4	0	4	20
11R Ø 15-000	2	7	2	1	1	3	0	7	21
11R Ø 15-003	2	7	2	1	1	3	0	7	19-25
11R Ø 15-005/6	2	7	2	1	1	3	0	7	35-36
11R Ø 15-009	2	7	2	1	1	3	0	7	24
11R Ø 15-010	2	7	2	1	1	3	0	7	22
11R Ø 15-023	2	7	2	1	1	3	0	7	17
11R Ø 15-030	2	7	2	1	1	3	0	7	23
11R Ø 15-033/34	2	7	2	1	1	3	0	7	33-34
11R Ø 20-000	2	7	2	1	1	*)	0	7	27
11R Ø 20-001	2	7	2	1	1	*)	0	7	37
11R Ø 20-002	2	7	2	1	1	*)	0	7	38
11R Ø 20-006	2	7	2	1	1	*)	0	7	30
11R Ø 20-007	2	7	2	1	1	*)	0	7	29
11R Ø 20-009	2	7	2	1	1	*)	0	7	28
11R Ø 20-017	2	7	2	1	1	*)	0	7	26

*) Hinges Surface	Classification UNI EN 1670
Zinc	3
Matt Nickel	0
Zinc GSS	3
Nickel	2
Brassed	2



Functional test according to RAL standard

The capacity values of the SFS hinges have been measured after subjecting them to the test and in the conditions established by the RAL standard which we summarise below:

1.1 Duration test of 200,000 cycles

Door opening by least 90° and closing

7 - 9 openings and closings per minute

The door is initially moved for 10,000 cycles, then the X1 - Y1 measurement is checked. After another 190,000 cycles the X2 - Y2 measurement is checked.

The horizontal and vertical offset can be a maximum of 2mm. The hinges must remain functional and after the cycles the door must be able to close starting from a 15° angle.

1.2 Additional load

Open the door at 90° and repeat the load.

After removing the load, the door must not exceed the permissible values in closed position.

The stated weight capacity value was calculated with a dynamic test carried out according to the RAL standard, involving:

- 200,000 opening movements at 90°
- door measuring 2000mm (height) x 1000mm (width)
- 2 fitted hinges

It is important to bear in mind not only the stress due to structural factors (weight and dimensions) but also the external factors that the system is subjected to, as these can affect the weight capacity and life-span of the hinge, for example:

- measurements of the door outside the tolerance ranges (width and/or height)
- place of installation and use of the door (residential buildings, public buildings, schools, nurseries, etc.)
- frequency of opening
- presence of obstacles that prevent opening and/or closing (door stops, reveals, etc.)
- door opener and/or door closer
- doors with inward or outward opening

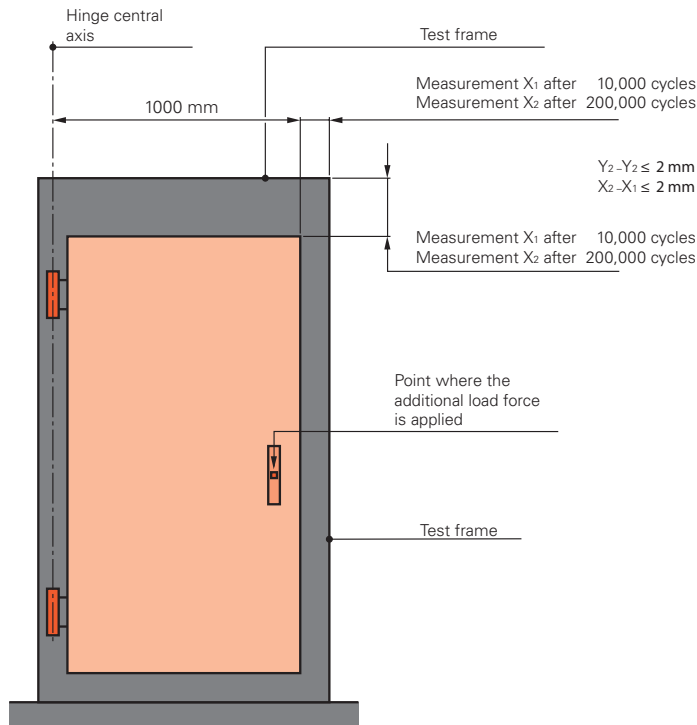
- weather conditions
- type of frame material (wood, PVC, aluminium etc.)

Care should be taken to choose the most suitable system, bearing in mind the factors listed above and the following variables:

- number of hinges fitted
- position that the hinges are fitted in
- type of hinges fitted

The essential requirements for ensuring the best performance of a hinge are:

- installation in a workmanlike manner of the hinge, of its accessories and of the door
- stability and correct installation of the frame



Number of hinges to be fitted

There are formulas to correctly calculate the stresses that the hinges are prone to. Beware that the examples do not take into account all possible variables related to specific applications. It is therefore suggested to contact SFS technical assistance service who can recommend the best solution.

Example A:

Weight of the door/window above the declared weight capacity value

The weight capacity value of 3rd or 4th additional hinge is as follows:

30% of the stated single hinge weight capacity up to 100 kg hinge.
20% of the stated single hinge weight capacity over 100 kg hinge.

Ex.:
Weight of the door: 95 kg
Dimensions of the door: 2000x1000 mm

Declared weight capacity for 2 hinges: 80 kg (=> weight capacity for 1 hinge: 40 kg)
Weight capacity of additional hinge (3rd or 4th): 30% of 40 kg = 12 kg

Number of hinges to be fitted:
80 kg + 12 kg + 12 kg = 104 kg => 4 hinges

Example B:

Width of the door/window above 1000mm

A 10% increase in weight of the door/window should be considered for each 100 mm of width above 1000 mm.

Ex.:
Weight of the door: 70 kg

Dimensions of the door: 2000x1200 mm
Door actual weight: 70 kg + 20% of 70 kg = 84 kg

Declared weight capacity for 2 hinges: 80 kg (=> weight capacity for 1 hinge: 40 kg)
Weight capacity of additional hinge (3rd or 4th): 30% of 40 kg = 12 kg

Number of hinges to be fitted:
80 kg + 12 kg = 92 kg => 3 hinges

Example C:

Weight of the door/window with standard door closing device

A 20% increase in weight of the door/window should be considered when a standard door closing device is present.

Ex.:
Weight of the door: 70 kg
Dimensions of the door: 2000x1000 mm
Door actual weight: 70 kg + 20% of 70 kg = 84 kg

Declared weight capacity for 2 hinges: 80 kg (=> weight capacity for 1 hinge: 40 kg)
Weight capacity of additional hinge (3rd or 4th): 30% of 40 kg = 12 kg

Number of hinges to be fitted (3 hinges at least, 4 hinges recommended):
80 kg + 12 kg + 12 kg = 104 kg => 4 hinges

Number of hinges to be fitted

Example D:

Weight of the door/window with backcheck door closing device

A 75% increase in weight of the door/window should be considered when a backcheck door closing device is present.

Ex.:
Weight of the door: 70 kg
Dimensions of the door: 2000x1000 mm
Door actual weight: 70 kg + 75% of 70 kg = 123 kg

Declared weight capacity for 2 hinges: 110 kg (=> weight capacity for 1 hinge: 55 kg)
Weight capacity of additional hinge (3rd or 4th): 20% of 55 kg = 11 kg

Number of hinges to be fitted (3 hinges at least, 4 hinges recommended):
 $110 \text{ kg} + 11 \text{ kg} + 11 \text{ kg} = 132 \text{ kg} \Rightarrow 4 \text{ hinges}$

In the case of obstacles, door stops, door closers and door openers, it is advisable to use an additional hinge and in any case to consider the extent of the leverage effect that could occur.

This rule is valid for a maximum of 4 fitted hinges. If the number is any higher, a different type of product should be used. Please contact the SFS technical assistance service for advice.

Installation of additional hinges

Additional hinges are usually fitted symmetrically for aesthetic reasons or to ensure pressure on the seal at the centre.

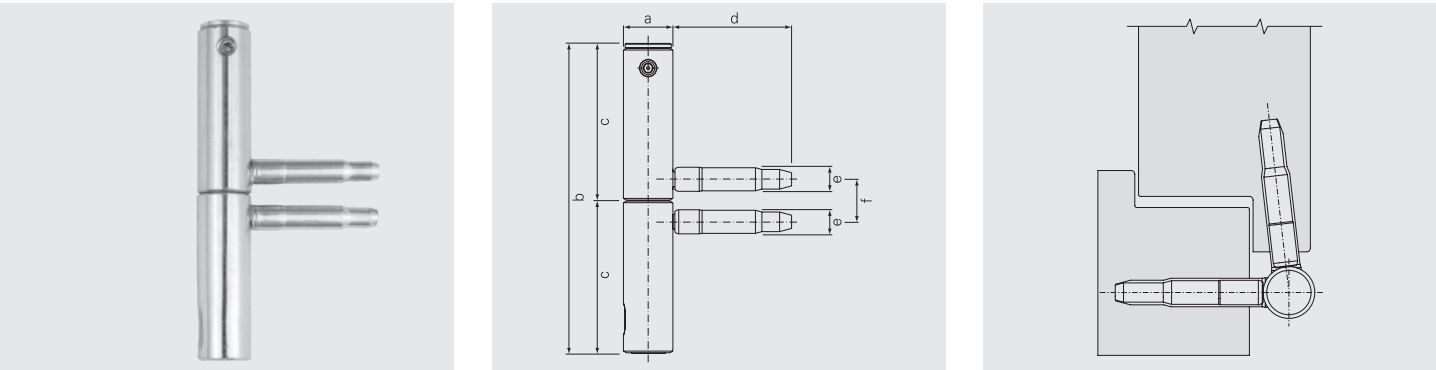
In any case, the fitting of additional hinges at the points under greatest stress improves the weight bearing capacity.

For example:

- if the door is of above standard width (2000mm x 1000mm), the third hinge should be fitted at an average distance of 300mm from the upper hinge.
- when there is a door stop on the floor, the additional hinge should be fitted at a distance of 300mm from the lower one.
- when there is a door open/closer and in any other case with 4 recommended hinges, the third one should be fitted at an average distance of 300mm from the upper one and the forth one should be fitted at a distance of 300mm from the lower one..

Rebated application

ATC Ø 15



Application: ATC Ø 15–Self closing mechanism left and right hand

For timber doors



Technical information

a	b	c	d	e	f
15.0	93.8	46.0	36.0	7.0	12.6

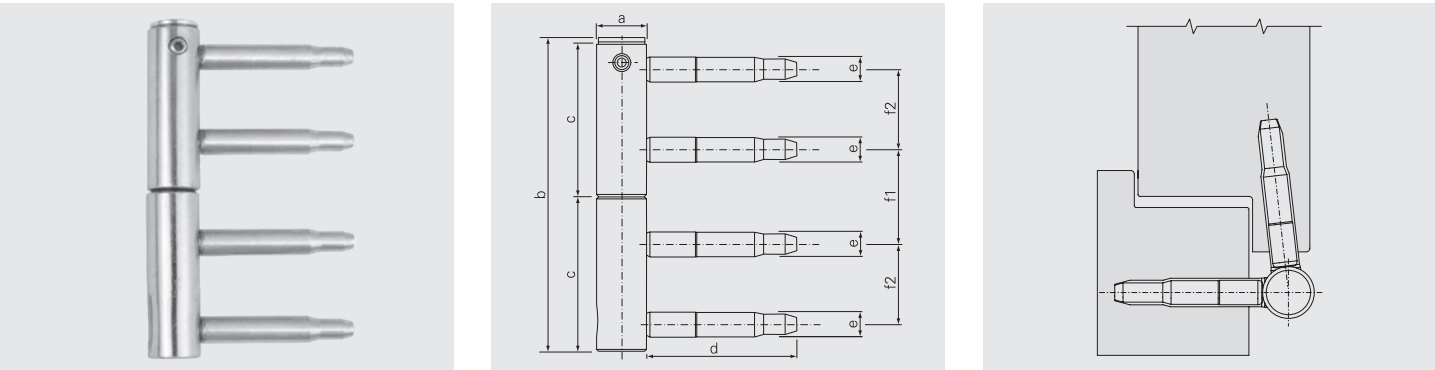
Range

Product	Packa- ging	Material	Surface	Corrosion resistance	Art. No
ATC15F058SZS - left	10	Steel	Zinc GSS	5	1632528
ATC15F059SZS - right					1632541

Jigs/Accessories

Product		Page	Product		Page
Jigs		57	Caps		42-44-49-53
Drill bit		57			

ATC Ø 15



Application: ATC Ø 15–Self closing mechanism left and right hand

For timber doors



Technical information

a	b	c	d	e	f1	f2
15.0	93.8	46.0	45.0	7.45	28.0	24.0

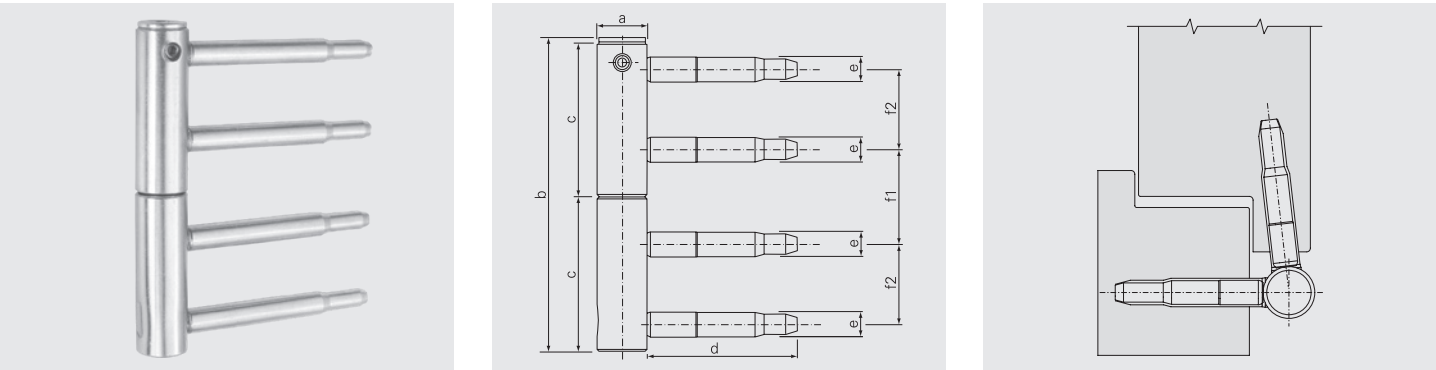
Range

Product	Packa- ging	Material	Surface	Corrosion resistance	Art. No
ATC15F056SZS - left	10	Steel	Zinc GSS	5	1627705
ATC15F057SZS - right					1627707

Jigs/Accessories

Product		Page	Product		Page
Jigs		57	Caps		42-44-49-53
Drill bit		57			

ATC Ø 15



Application: ATC Ø 15–Self closing mechanism left and right hand

For timber doors



Technical information

a	b	c	d	e	f1	f2
15.0	93.8	46.0	60.0	7.45	28.0	24.0

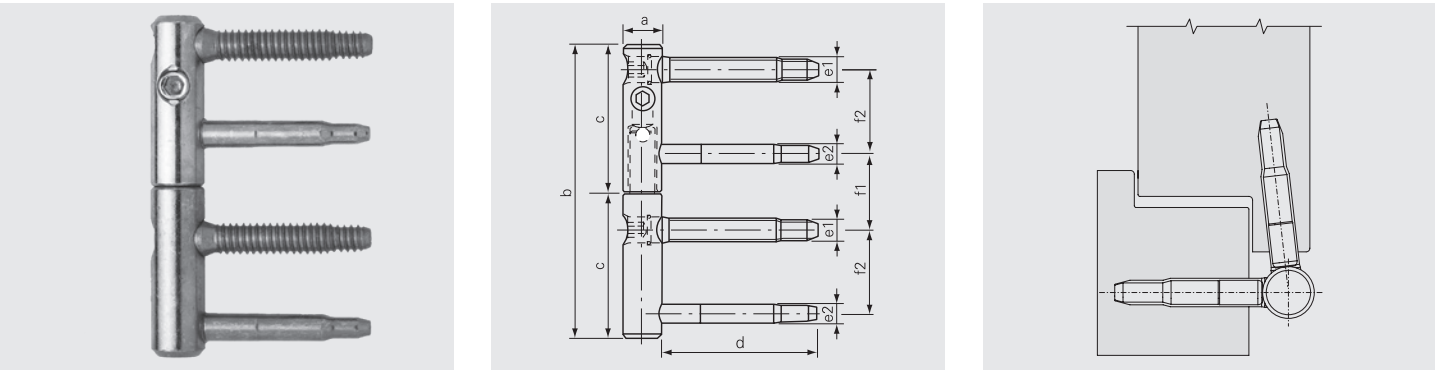
Range

Product	Packa- ging	Material	Surface	Corrosion resistance	Art. No
ATC15F054SZS - left	10	Steel	Zinc GSS	5	1627055
ATC15F055SZS - right					1627061

Jigs/Accessories

Product		Page	Product		Page
Jigs		57	Caps		42-44-49-53
Drill bit		57			

11R Ø 15



Application: 11R Ø 15–Adjustable hinge for self closing system

For timber doors

Load capacity with 2 hinges 100 kg

Adjustable 0/+3mm in height, +/-3,0mm horizontal and gasket pressure



Technical information

a	b	c	d	e1	e2	f1	f2
15.0	92.0	46.0	60.0	8.7	7.6	28.0	24.0

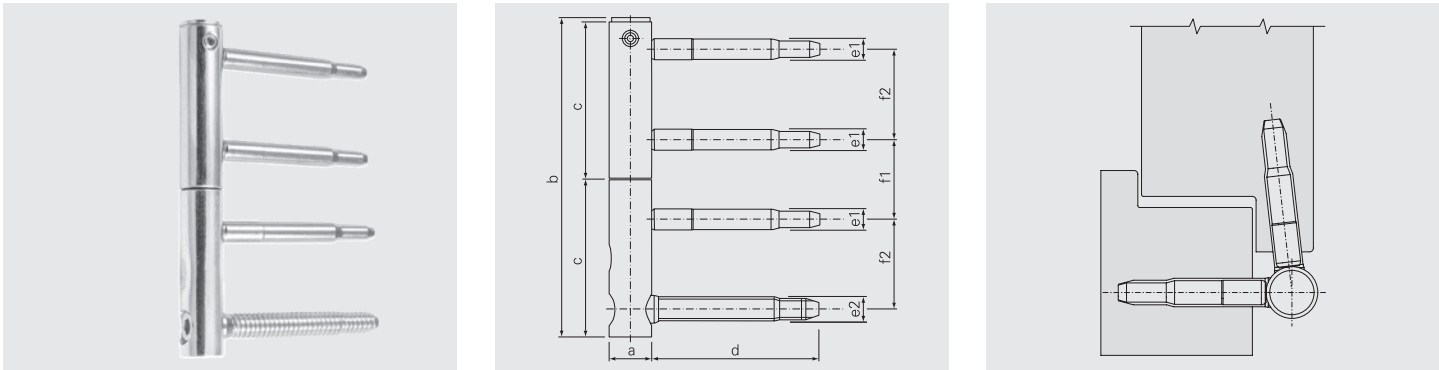
Range

Product	Packa- ging	Material	Surface	Corrosion resistance	Art. No
11R15F023SZS	10	Steel	Zinc GSS	5	768694

Jigs/Accessories

Product		Page	Product		Page
Jigs		57	Caps		42-44-49-53
Drill bit		57			

ATC Ø 15



Application: ATC Ø 15–Self closing mechanism left and right hand

For timber doors



Technical information

a	b	c	d	e1	e2	f1	f2
15.0	113.8	56.0	60.0	7.45	8.7	28.0	32.0

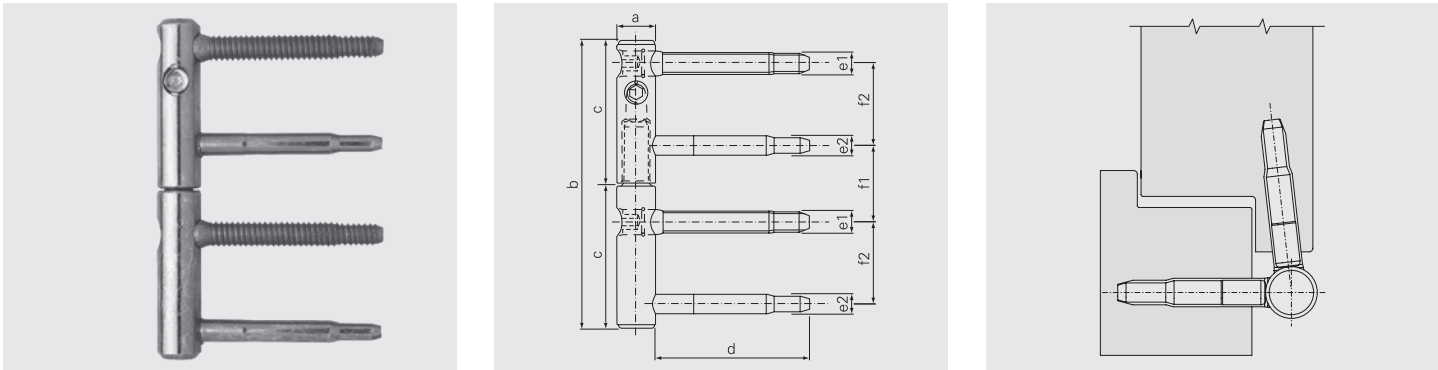
Range

Product	Packa- ging	Material	Surface	Corrosion resistance	Art. No
ATC15F050SZS - left	10	Steel	Zinc GSS	5	1618841
ATC15F051SZS - right					1618848

Jigs/Accessories

Product		Page	Product		Page
Jigs		57	Caps		42-44-49-53
Drill bit		57			

11R Ø 15



Application: 11R Ø 15–Adjustable hinge for self closing system

For timber doors

Load capacity with 2 hinges 80 kg

Adjustable 0/+3mm in height, +/-3,0mm horizontal and gasket pressure



Technical information

a	b	c	d	e1	e2	f1	f2
15.0	112.0	56.0	60.0	8.7	7.45	29.0	32.0

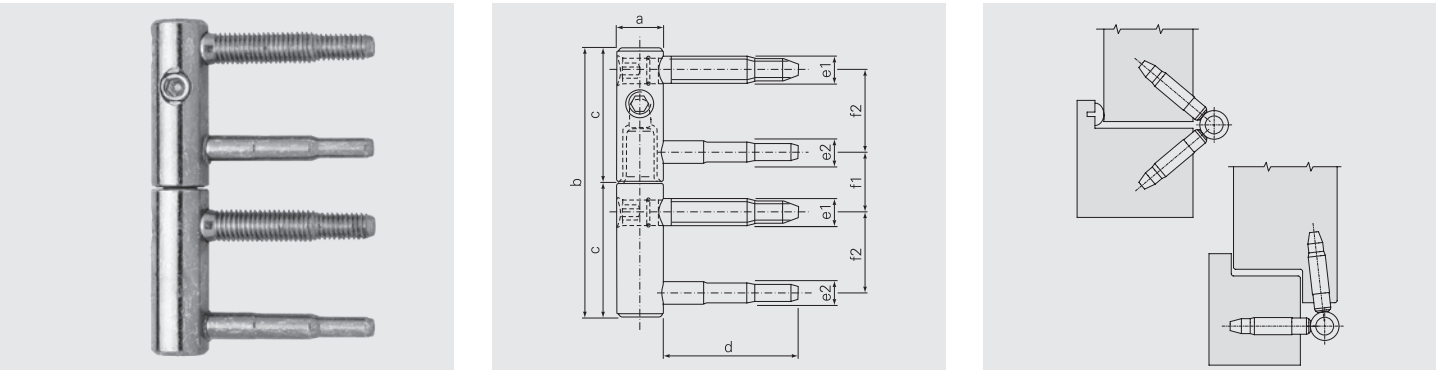
Range

Product	Packa- ging	Material	Surface	Corrosion resistance	Art. No
11R15S003SZS	12	Steel	Zinc GSS	5	706703

Jigs/Accessories

Product		Page	Product		Page
Jigs		57	Caps		42-44-49-53
Drill bit		57			

11R Ø 14



Application: 11R Ø 14–Adjustable hinge

For timber doors and windows
Load capacity with 2 hinges 80 kg
Adjustable 0/+3 mm in height, +/-3 mm horizontal and gasket pressure



Technical information

a	b	c	d	e1	e2	f1	f2
14.0	80.0	40.0	40.0	7.7	6.6	18.0	24.0

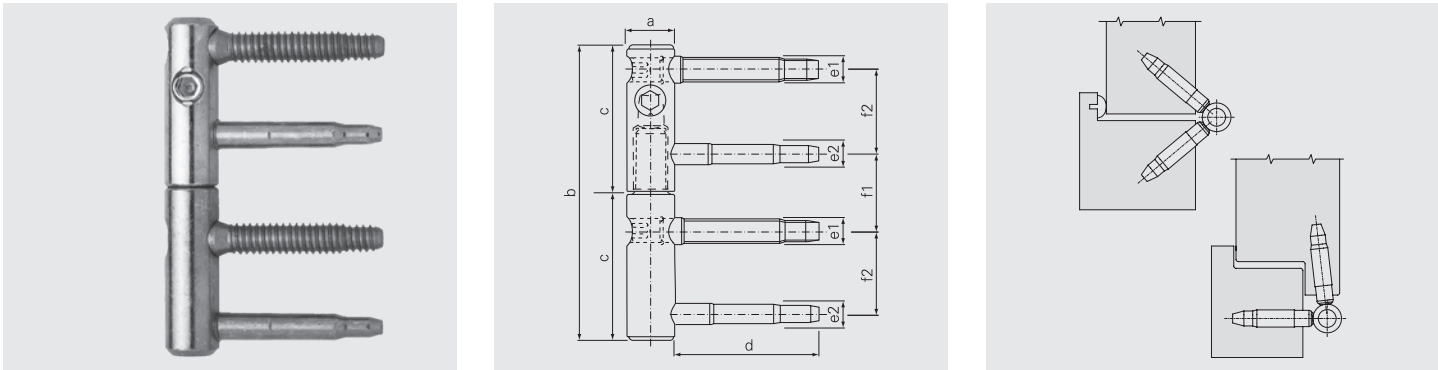
Range

Product	Packa- ging	Material	Surface	Corrosion resistance	Art. No
11R14S000SZS	12	Steel	Zinc GSS	5	710893

Jigs/Accessories

Product	Page	Product	Page
Jigs	57	Caps	40-41-48-52
Drill bit	57		

11R Ø 15



Application: 11R Ø 15–Adjustable hinge

For timber doors and windows
Load capacity with 2 hinges 80 kg
Adjustable 0/+3 mm in height, +/-3 mm horizontal and gasket pressure



Technical information

a	b	c	d	e1	e2	f1	f2
15.0	92.0	46.0	45.0	8.7	7.6	28.0	24.0

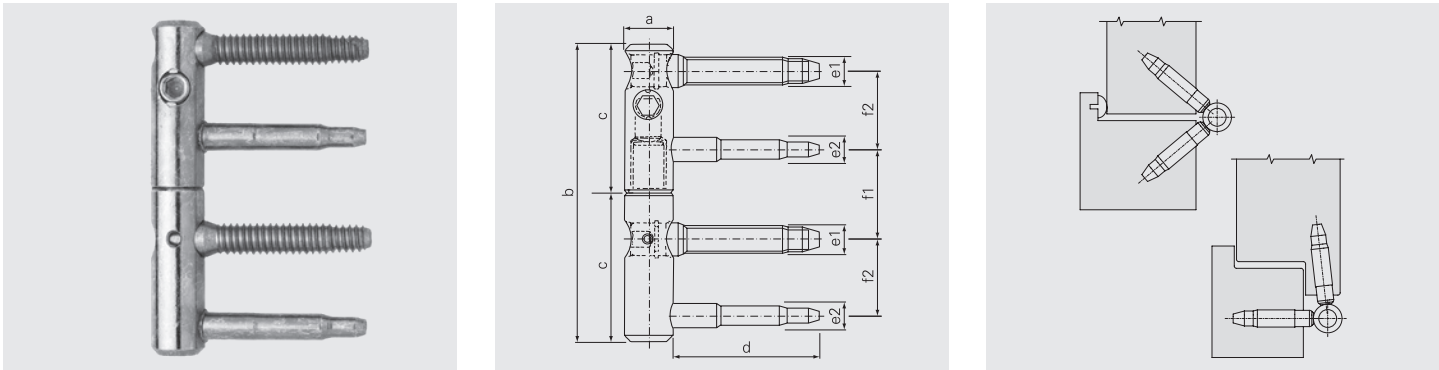
Range

Product	Packa- ging	Material	Surface	Corrosion resistance	Art. No
11R15S000SZS	12	Steel	Zinc GSS	5	702012

Jigs/Accessories

Product	Page	Product	Page
Jigs	57	Caps	42-44-49-53
Drill bit	57		

11R Ø 15



Application: 11R Ø 15-010–Adjustable hinge with security screws

For timber doors and windows

Load capacity with 2 hinges 80 kg

Adjustable 0/+3 mm in height, +/-3 mm horizontal and gasket pressure



Technical information

a	b	c	d	e1	e2	f1	f2
15.0	92.0	46.0	45.0	8.7	7.6	28.0	24.0

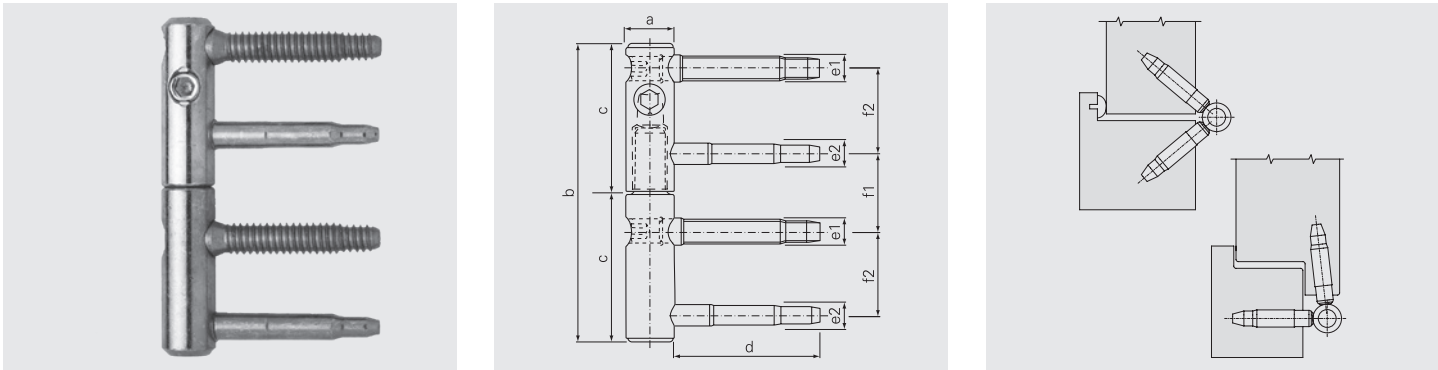
Range

Product	Packa- ging	Material	Surface	Corrosion resistance	Art. No
11R15F010SZS	10	Steel	Zinc GSS	5	706702

Jigs/Accessories

Product	Page	Product	Page
Jigs	57	Caps	42-44-49-53
Drill bit	57		

11R Ø 15



Application: 11R Ø 15-030–Adjustable hinge

For timber doors and windows

Load capacity with 2 hinges 100 kg

Adjustable 0/+3 mm in height, +/-3 mm horizontal and gasket pressure



Technical information

a	b	c	d	e1	e2	f1	f2
15.0	92.0	46.0	45.0	8.7	7.6	28.0	24.0

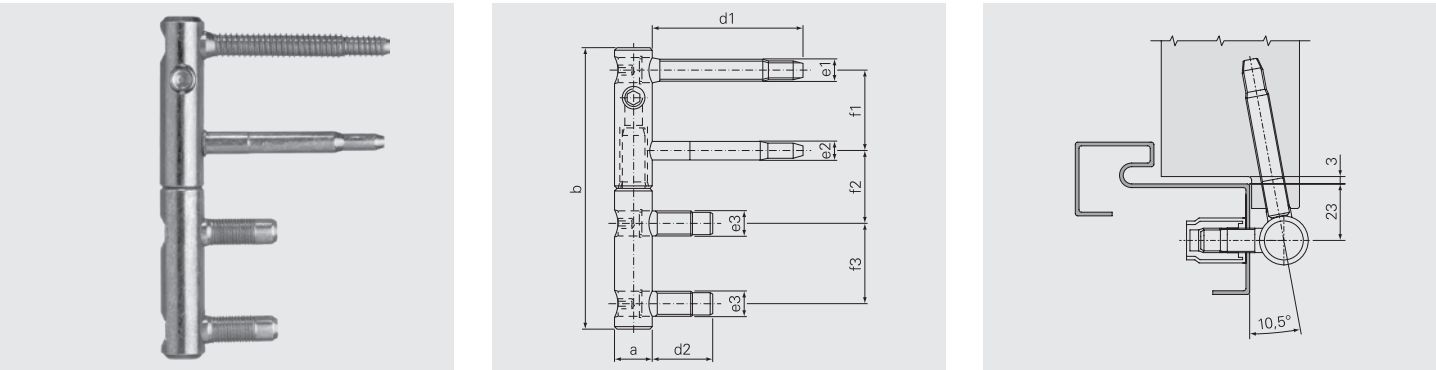
Range

Product	Packa- ging	Material	Surface	Corrosion resistance	Art. No
11R15F030XS	10	Stainless steel	Brushed Stainless Steel	5	1422749

Jigs/Accessories

Product	Page	Product	Page
Jigs	57	Caps	42-44-49-53
Drill bit	57		

11R Ø 15



Application: 11R Ø 15-009–Adjustable hinge

For steel frames
Load capacity with 2 hinges 80 kg
Adjustable 0/+3 mm in height, +/-3 mm horizontal and gasket pressure



Technical information

a	b	d1	d2	e1	e2	e3	f1	f2	f3
15.0	112.0	60.0	24.0	8.7	7.45	10.0	32.0	29.0	32.0

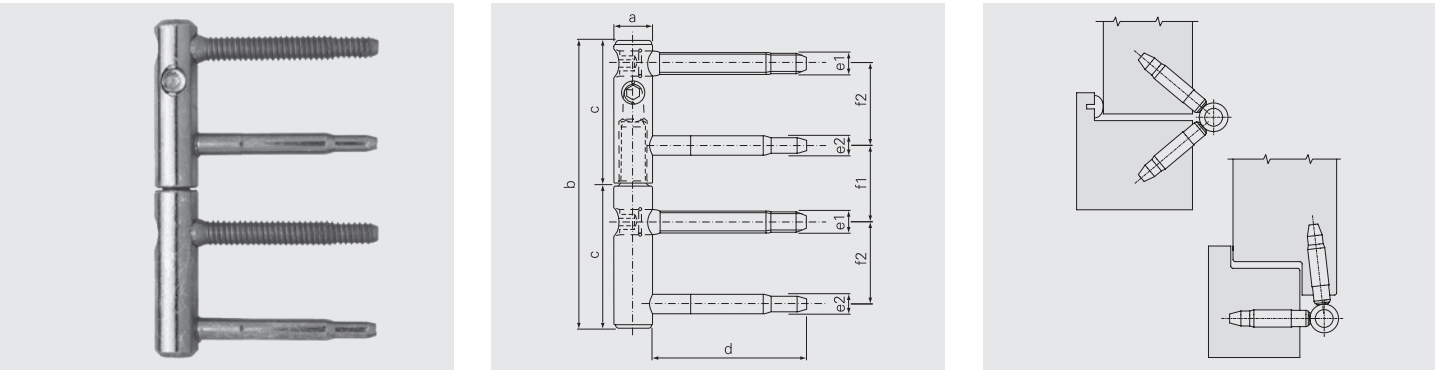
Range

Product	Packa- ging	Material	Surface	Corrosion resistance	Art. No
11R15F009SZS	10	Steel	Zinc GSS	5	1137825

Jigs/Accessories

Product	Page	Product	Page
Jigs	57	Caps	43-45-50-54
Drill bit	57		

11R Ø 15



Application: 11R Ø 15-003–Adjustable hinge

For timber doors and windows
Load capacity with 2 hinges 80 kg
Adjustable 0/+3 mm in height, +/-3 mm horizontal and gasket pressure



Technical information

a	b	c	d	e1	e2	f1	f2
15.0	112.0	56.0	60.0	8.7	7.45	29.0	32.0

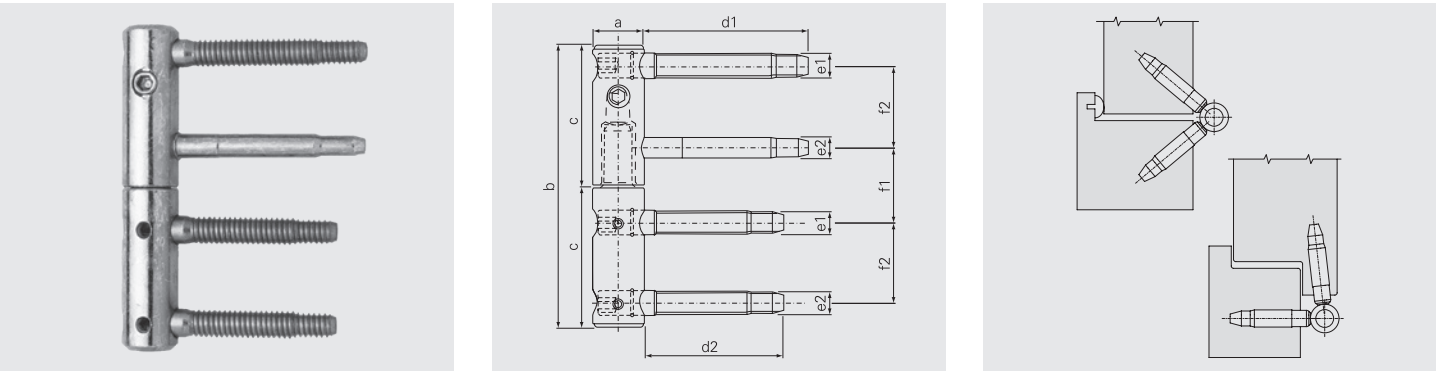
Range

Product	Packa- ging	Material	Surface	Corrosion resistance	Art. No
11R15S003SZS	10	Steel	Zinc GSS	5	706703

Jigs/Accessories

Product	Page	Product	Page
Jigs	57	Caps	43-45-50-54
Drill bit	57		

11R Ø 20



Application: 11R Ø 20-017–Adjustable hinge with security screws

For timber doors
Load capacity with 2 hinges 120 kg
Adjustable 0/+3 mm in height, +/-3 mm horizontal and gasket pressure
Frame studs self-tapping



Technical information

a	b	c	d1	d2	e1	e2	f1	f2
20.0	112.0	56.0	80.0	55.0	9.5	8.4	29.0	32.0

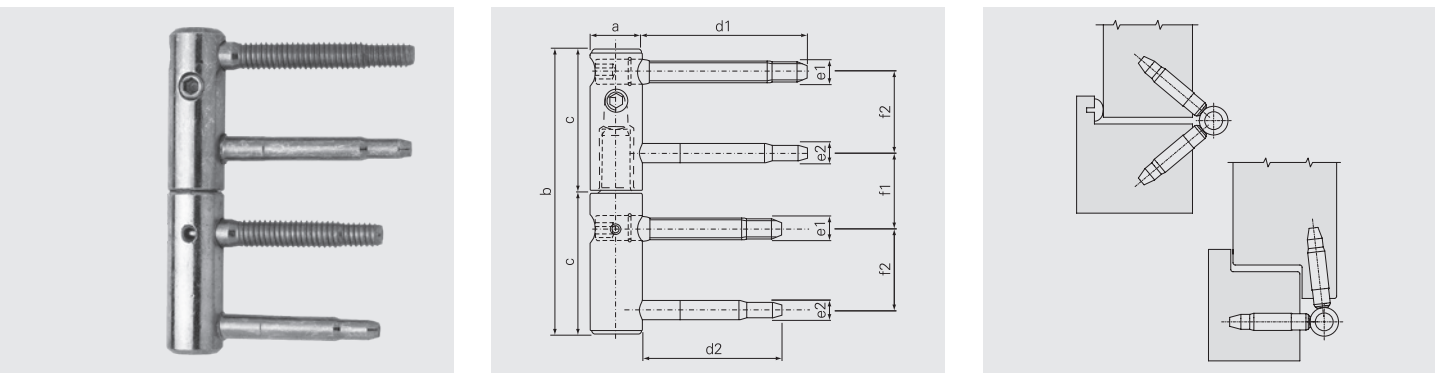
Range

Product	Packa- ging	Material	Surface	Corrosion resistance	Art. No
11R20S017SZS	10	Steel	Zinc GSS	5	1063762

Jigs/Accessories

Product	Page	Product	Page
Jigs	57	Caps	46-47-51-55
Drill bit	57		

11R Ø 20



Application: 11R Ø 20-000–Adjustable hinge with security screws

For timber doors
Load capacity with 2 hinges 120 kg
Adjustable 0/+3 mm in height, +/-3 mm horizontal and gasket pressure



Technical information

a	b	c	d1	d2	e1	e2	f1	f2
20.0	112.0	56.0	65.0	55.0	9.5	8.4	29.0	32.0

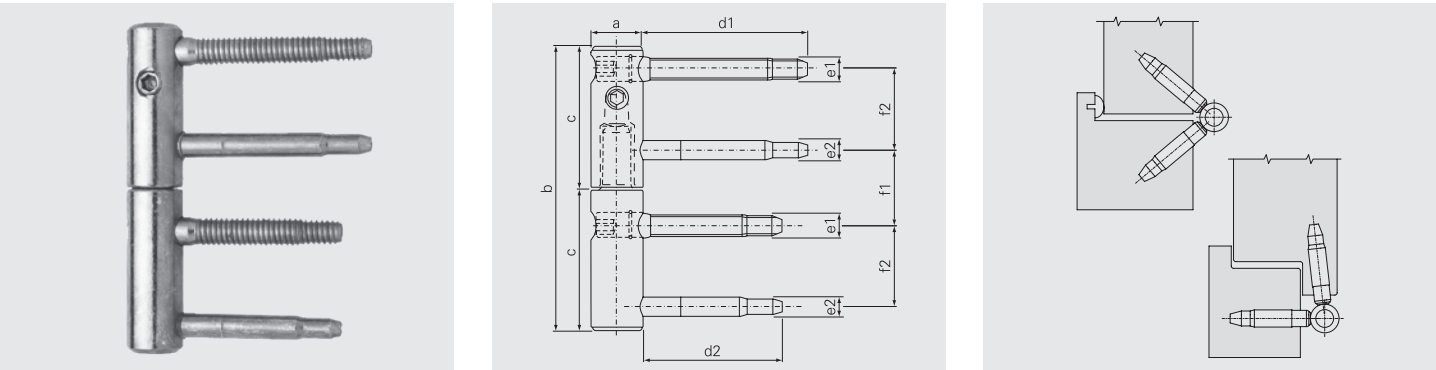
Range

Product	Packa- ging	Material	Surface	Corrosion resistance	Art. No
11R20F000XS	10	Stainless steel	Brushed Stainless Steel	5	1272282
11R20S000SZS		Steel	Zinc GSS		706705

Jigs/Accessories

Product	Page	Product	Page
Jigs	57	Caps	46-47-51-55
Drill bit	57		

11R Ø 20



Application: 11R Ø 20-009–Adjustable hinge with security screws

For timber doors
Load capacity with 2 hinges 120 kg
Adjustable 0/+3 mm in height, +/-3 mm horizontal and gasket pressure



Technical information

a	b	c	d1	d2	e1	e2	f1	f2
20.0	112.0	56.0	65.0	55.0	9.5	8.4	29.0	32.0

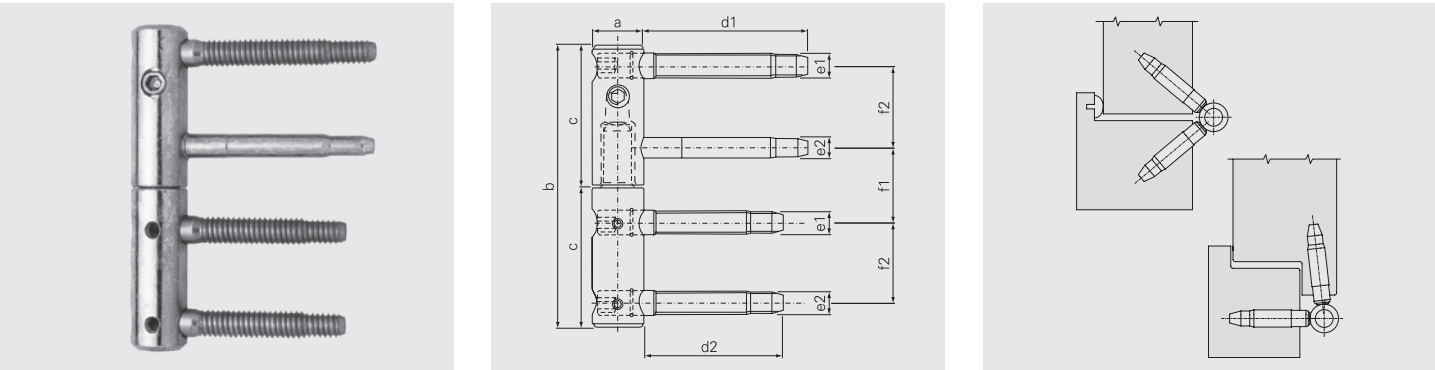
Range

Product	Packa- ging	Material	Surface	Corrosion resistance	Art. No
11R20S009SZS	10	Steel	Zinc GSS	5	706656

Jigs/Accessories

Product	Page	Product	Page
Jigs	57	Caps	46-47-51-55
Drill bit	57		

11R Ø 20



Application: 11R Ø 20-007–Adjustable hinge with security screws

For timber doors
Load capacity with 2 hinges 120 kg
Adjustable 0/+3 mm in height, +/-3 mm horizontal and gasket pressure
Frame studs self-tapping



Technical information

a	b	c	d1	d2	e1	e2	f1	f2
20.0	112.0	56.0	65.0	55.0	9.5	8.4	29.0	32.0

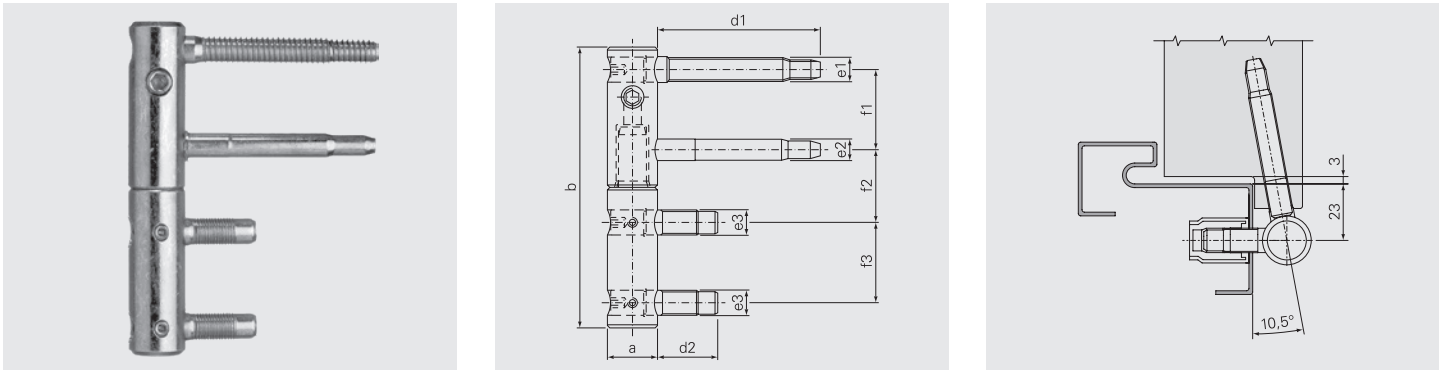
Range

Product	Packa- ging	Material	Surface	Corrosion resistance	Art. No
11R20S007SZS	10	Steel	Zinc GSS	5	710894

Jigs/Accessories

Product	Page	Product	Page
Jigs	57	Caps	46-47-51-55
Drill bit	57		

11R Ø 20



Application: 11R Ø 20-006–Adjustable hinge with security screws

For steel frames
Load capacity with 2 hinges 120 kg
Adjustable 0/+3 mm in height, +/-3 mm horizontal and gasket pressure
Both rotating frame studs self-tapping



Technical information

a	b	d1	d2	e1	e2	e3	f1	f2	f3
20.0	112.0	65.0	24.0	9.5	8.4	10.0	32.0	29.0	32.0

Range

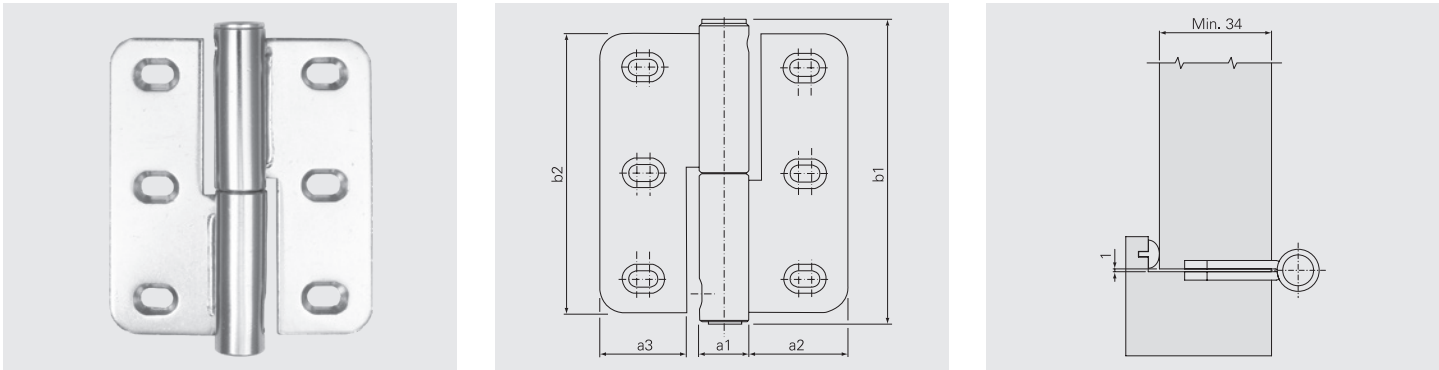
Product	Packa- ging	Material	Surface	Corrosion resistance	Art. No
11R20S006SZS	10	Steel	Zinc GSS	5	1137827

Jigs/Accessories

Product	Page	Product	Page
Jigs	57	Caps	46-47-51-55
Drill bit	57		

Flush fit
application

ATC Ø 15



Application: ATC Ø 15–Self closing mechanism left and right hand

For timber doors
Spacers available for horizontal adjustment
0,5mm cod.998344; 1,0mm cod.998345; 2,0mm cod.998346



Technical information

a1	a2	a3	b1	b2
15.0	31.0	27.0	93.5	86.0

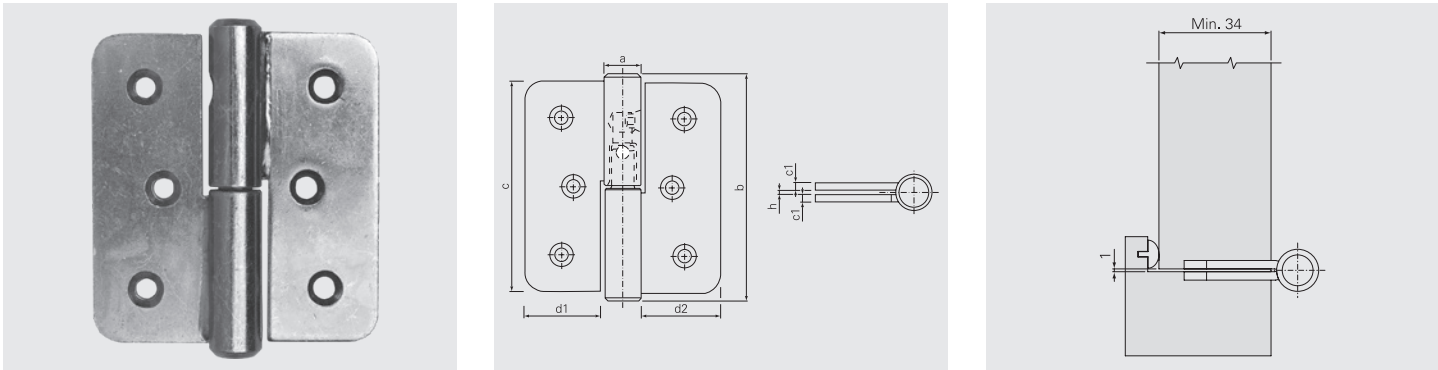
Range

Product	Packa- ging	Material	Surface	Corrosion resistance	Art. No
ATC15F052SN - left	10	Steel	Nickel	0	1622371
ATC15F053SN - right					1622372

Jigs/Accessories

Product		Page	Product		Page
			Caps		42-44-49-53

11R Ø 15



Application: 11R Ø 15-033–Adjustable hinge left hand for self closing system

For timber doors in aria 1mm
Load capacity with 2 hinges 100 kg
Adjustable 0/+3mm in height
Spacers available for horizontal adjustment: 0,5mm cod.998344; 1,0mm cod.998345; 2,0mm cod.998346



Technical information

a	b	c	c1	d1	d2	h
15.0	92.0	86.0	3.0	31.0	33.0	1.0

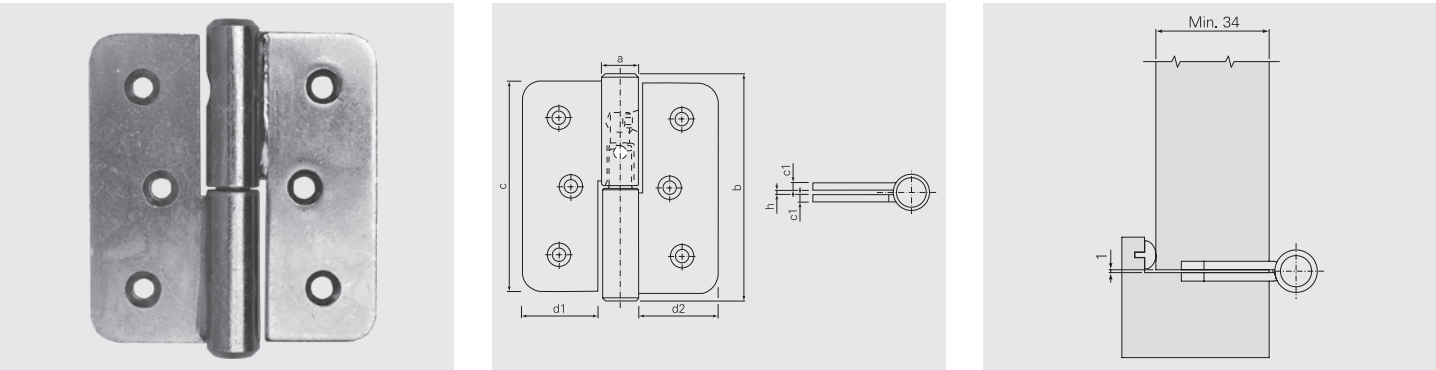
Range

Product	Packa- ging	Material	Surface	Corrosion resistance	Art. No
11R15F033SZS	10	Steel	Zinc GSS	5	753375
11R15F033SN			Nickel	0	515018
11R15F033SCO			Sandblasted Matt Chrome		514742

Jigs/Accessories

Product		Page	Product		Page
			Caps		42-44-49-53

11R Ø 15



Application: 11R Ø 15-034–Adjustable hinge right hand for self closing system

For timber doors air gap 1mm

Load capacity with 2 hinges 100 kg

Adjustable 0/+3mm in height

Spacers available for horizontal adjustment: 0,5mm cod.998344; 1,0mm cod.998345; 2,0mm cod.998346



Technical information

a	b	c	c1	d1	d2	h
15.0	92.0	86.0	3.0	31.0	33.0	1.0

Range

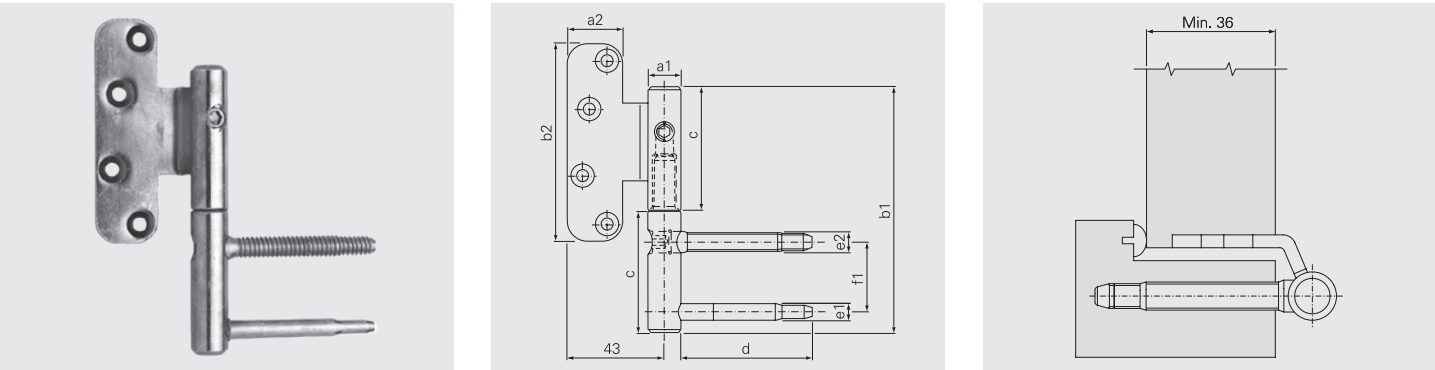
Product	Packa- ging	Material	Surface	Corrosion resistance	Art. No
11R15F034SZS	10	Steel	Zinc GSS	5	753376
11R15F034SN			Nickel	0	515020

Jigs/Accessories

Product		Page

Product		Page
Caps		42-44-49-53

11R Ø 15



Application: 11R Ø 15-005–Adjustable hinge left hand

For timber doors

Load capacity with 2 hinges 80 kg

Adjustable 0/+3mm in height e +/-3,0mm gasket pressure



Technical information

a1	a2	b1	b2	c	d	e1	e2	f1
15.0	25.0	112.0	90.0	56.0	60.0	7.45	8.7	32.0

Range

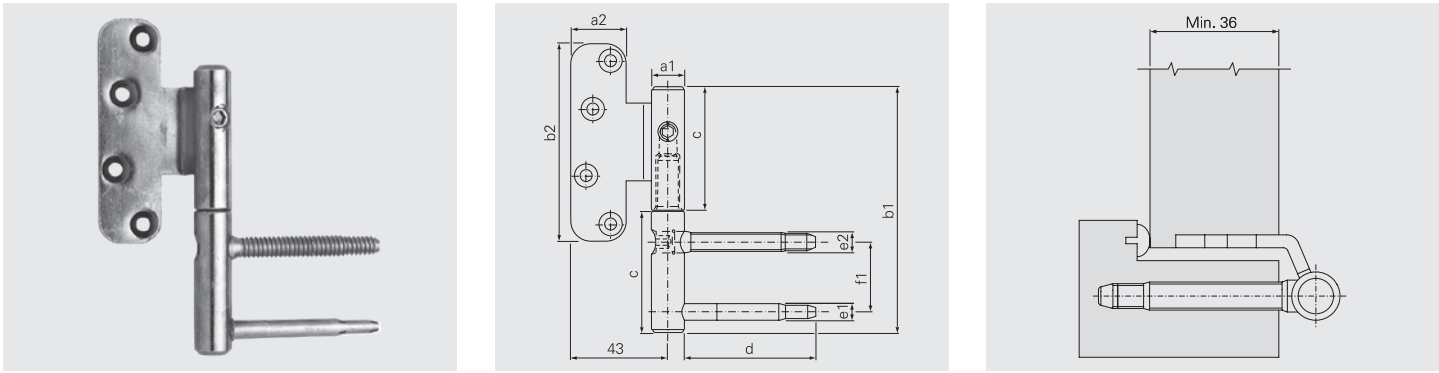
Product	Packa- ging	Material	Surface	Corrosion resistance	Art. No
11R15F005SZS	10	Steel	Zinc GSS	5	1063859

Jigs/Accessories

Product		Page
Jigs		57
Drill bit		57

Product		Page
Caps		43-45-50-54

11R Ø 15



Application: 11R Ø 15-006–Adjustable hinge right hand

For timber doors
Load capacity with 2 hinges 80 kg
Adjustable 0/+3mm in height e +/-3,0mm gasket pressure



Technical information

a1	a2	b1	b2	c	d	e1	e2	f1
15.0	25.0	112.0	90.0	56.0	60.0	7.45	8.7	32.0

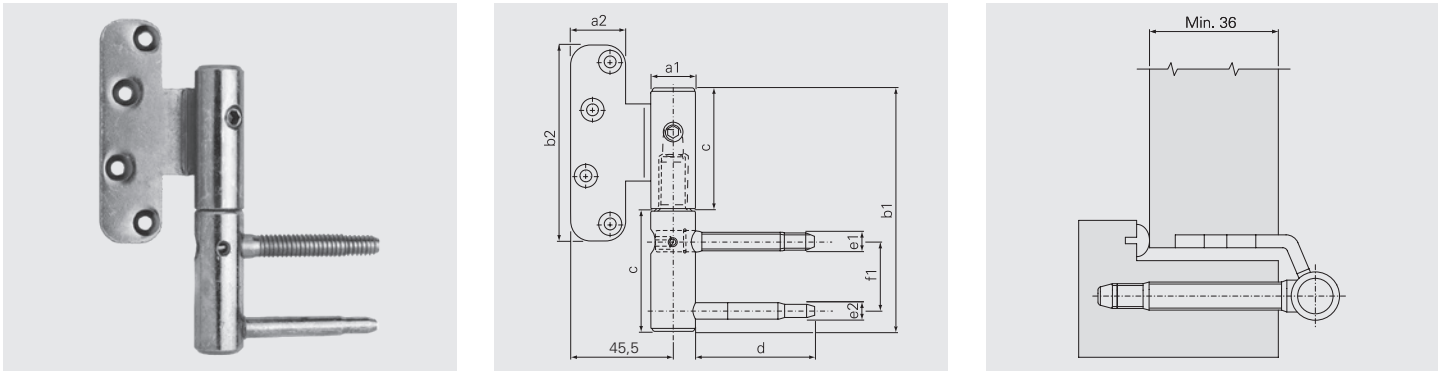
Range

Product	Packa- ging	Material	Surface	Corrosion resistance	Art. No
11R15F006SZS	10	Steel	Zinc GSS	5	1063857

Jigs/Accessories

Product	Page	Product	Page
Jigs	57	Caps	43-45-50-54
Drill bit	57		

11R Ø 20



Application: 11R Ø 20-001–Adjustable hinge left hand with security screws

For timber doors
Load capacity with 2 hinges 100 kg
Adjustable 0/+3mm in height e +/-3,0mm gasket pressure



Technical information

a1	a2	b1	b2	c	d	e1	e2	f1
20.0	25.0	112.0	90.0	56.0	55.0	9.5	8.4	32.0

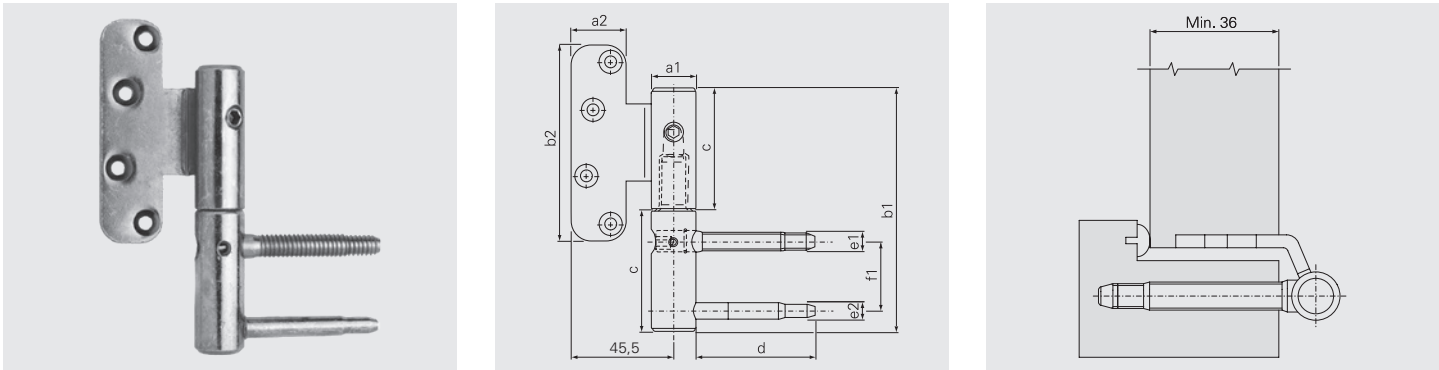
Range

Product	Packa- ging	Material	Surface	Corrosion resistance	Art. No
11R20F001SZS	10	Steel	Zinc GSS	5	1063475

Jigs/Accessories

Product	Page	Product	Page
Jigs	57	Caps	46-47-51-55
Drill bit	57		

11R Ø 20



Application: 11R Ø 20-002–Adjustable hinge right hand with security screws

For timber doors
Load capacity with 2 hinges 100 kg
Adjustable 0/+3mm in height e +/-3,0mm gasket pressure



Technical information

a1	a2	b1	b2	c	d	e1	e2	f1
20.0	25.0	112.0	90.0	56.0	55.0	9.5	8.4	32.0

Range

Product	Packaging	Material	Surface	Corrosion resistance	Art. No
11R20F002SZS	10	Steel	Zinc GSS	5	1063602

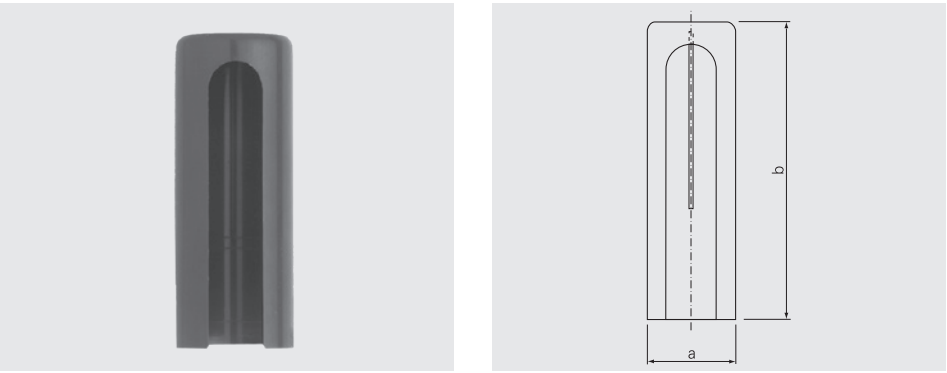
Jigs/Accessories

Product	Page	Product	Page
Jigs	57	Caps	46-47-51-55
Drill bit	57		



Accessories
and Jigs

180-14R-C00



Application: 180 Ø 14 –Flat caps
For adjustable hinges 11R Ø 14



Technical information

a	b
16.8	43.0

Range

Product	Packa- ging	Material	Surface	Corrosion resistance	Art. No
18014RFC00TA	50	ABS	White RAL 9010		889815
18014RFC00TM			Brown		889818
18014RFC00TS			Black RAL 9005		889816

Jigs/Accessories

Product		Page	Product		Page

180-14R-C02



Application: 180 Ø 14 –Flat caps
For adjustable hinges 11R Ø 14



Technical information

a	b
14.9	44.6

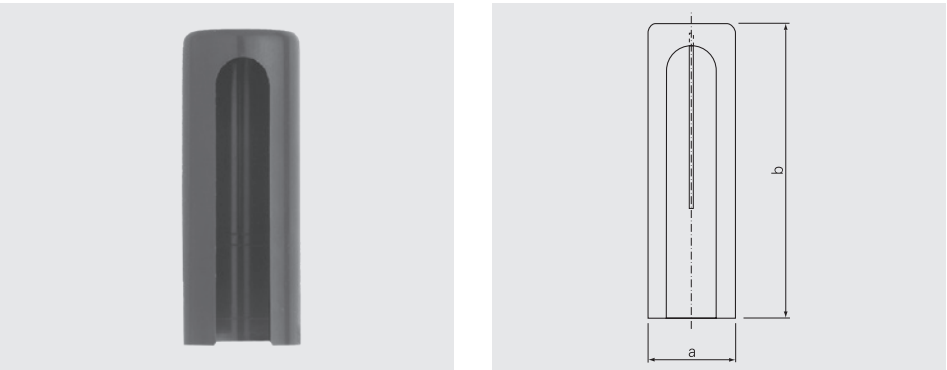
Range

Product	Packa- ging	Material	Surface	Corrosion resistance	Art. No
18014RFC02AKC	50	Aluminium	Light Bronzed		708258
18014RFC02ACA			Matt Chrome		936050
18014RFC02ANL			Bright Nickel		929969
18014RFC02ANO			Matt Nickel		929970
18014RFC02AEL			Brassed		929967

Jigs/Accessories

Product		Page	Product		Page

180-15R-C16



Application: 180 Ø 15 –Flat caps

For adjustable hinges 11R Ø 15x92



Technical information

a	b	
17.8	49.0	

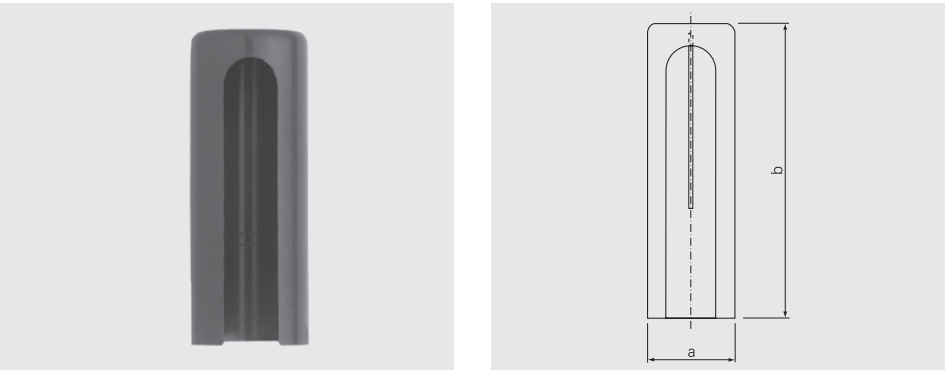
Range

Product	Packa- ging	Material	Surface	Corrosion resistance	Art. No
18015RFC16TA	50	ABS	White RAL 9010		298642
18015RFC16TM			Brown		298641

Jigs/Accessories

Product		Page	Product		Page

180-15R-C01



Application: 180 Ø 15 –Flat caps

For adjustable hinges 11R Ø 15x112



Technical information

a	b	
17.8	59.0	

Range

Product	Packa- ging	Material	Surface	Corrosion resistance	Art. No
18015RFC01TA	50	ABS	White RAL 9010		21692
18015RFC01TM			Brown		21695
18015RFC01TS			Black RAL 9005		21703

Jigs/Accessories

Product		Page	Product		Page

180-15R-C02



Application: 180 Ø 15 –Flat caps
For adjustable hinges 11R Ø 15x92



Technical information

a	b	
15.9	50.6	

Range

Product	Packa- ging	Material	Surface	Corrosion resistance	Art. No
18014RFC02AKC	50	Aluminium	Light Bronzed		700587
18014RFC02ACA			Matt Chrome		936052
18014RFC02ANL			Bright Nickel		923200
18014RFC02ANO			Matt Nickel		923201
18014RFC02AEL			Brassed		923199

Jigs/Accessories

Product		Page	Product		Page

180-15R-C03



Application: 180 Ø 15 –Flat caps
For adjustable hinges 11R Ø 15x112



Technical information

a	b	
15.9	60.5	

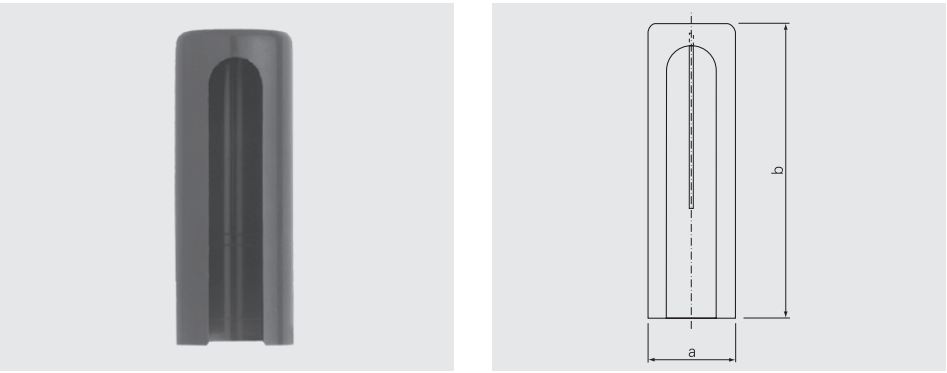
Range

Product	Packa- ging	Material	Surface	Corrosion resistance	Art. No
18014RFC03AKC	50	Aluminium	Light Bronzed		744963
18014RFC03ACA			Matt Chrome		936063
18014RFC03ANL			Bright Nickel		929977
18014RFC03ANO			Matt Nickel		929979
18014RFC03AEL			Brassed		929976

Jigs/Accessories

Product		Page	Product		Page

180-20R-C00



Application: 180 Ø 20 –Flat caps

For adjustable hinges 11R Ø 20x112



Technical information

a	b	
22.8	59.0	

Range

Product	Packa- ging	Material	Surface	Corrosion resistance	Art. No
18020RFC00TA	50	ABS	White RAL 9010		21713
18020RFC00TM			Brown		21717
18020RFC00TS			Black RAL 9005		21721

Jigs/Accessories

Product		Page	Product		Page

180-20R-C01



Application: 180 Ø 20 –Flat caps

For adjustable hinges 11R Ø 20x112



Technical information

a	b	
20.8	60.5	

Range

Product	Packa- ging	Material	Surface	Corrosion resistance	Art. No
18020RFC01AKC	50	Aluminium	Light Bronzed		997826
18020RFC01ACA			Matt Chrome		936065
18020RFC01ANL			Bright Nickel		929986
18020RFC01ANO			Matt Nickel		929988
18020RFC01AEL			Brassed		929982

Jigs/Accessories

Product		Page	Product		Page

180T-14R-C00



Application: 180T Ø 14 –Domed caps

For adjustable hinges 11R Ø 14



Technical information

a	b
14.9	49.5

Range

Product	Packa- ging	Material	Surface	Corrosion resistance	Art. No
180T14RFC00ACA	50	Aluminium	Matt Chrome		936076
180T14RFC00ANL			Bright Nickel		937622
180T14RFC00AEL			Brassed		937617

Jigs/Accessories

Product		Page	Product		Page

180T-15R-C03



Application: 180 Ø 15 –Domed caps

For adjustable hinges 11R Ø 15x92



Technical information

a	b
15.9	56.0

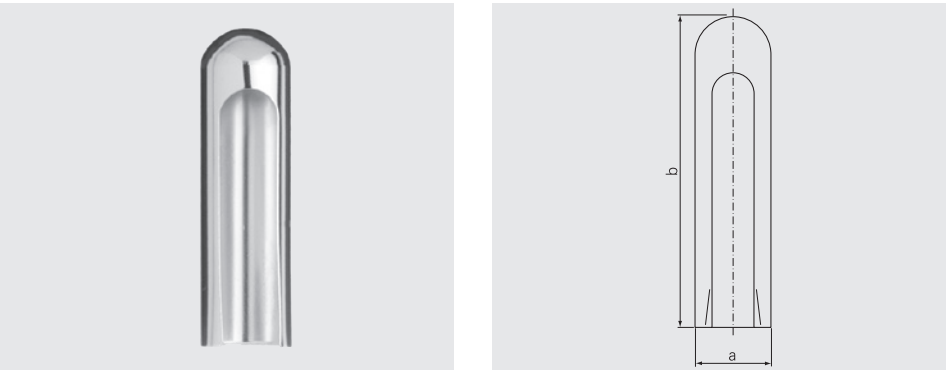
Range

Product	Packa- ging	Material	Surface	Corrosion resistance	Art. No
180T15RFC03AKC	50	Aluminium	Light Bronzed		700590
180T15RFC03ACA			Matt Chrome		936084
180T15RFC03ANL			Bright Nickel		953981
180T15RFC03ANO			Matt Nickel		953982
180T15RFC03AEL			Brassed		947126

Jigs/Accessories

Product		Page	Product		Page

180T-15R-C02



Application: 180T Ø 15 –Domed caps
For adjustable hinges 11R Ø 15x112



Technical information

a	b	
15.9	66.0	

Range

Product	Packa- ging	Material	Surface	Corrosion resistance	Art. No
180T15RFC02ACA	50	Aluminium	Matt Chrome		936079
180T15RFC02ANL			Bright Nickel		946200
180T15RFC02AEL			Brassed		944245

Jigs/Accessories

Product		Page	Product		Page

180T-20R-C01



Application: 180 Ø 20 –Domed caps
For adjustable hinges 11R Ø 20x112



Technical information

a	b	
20.8	66.0	

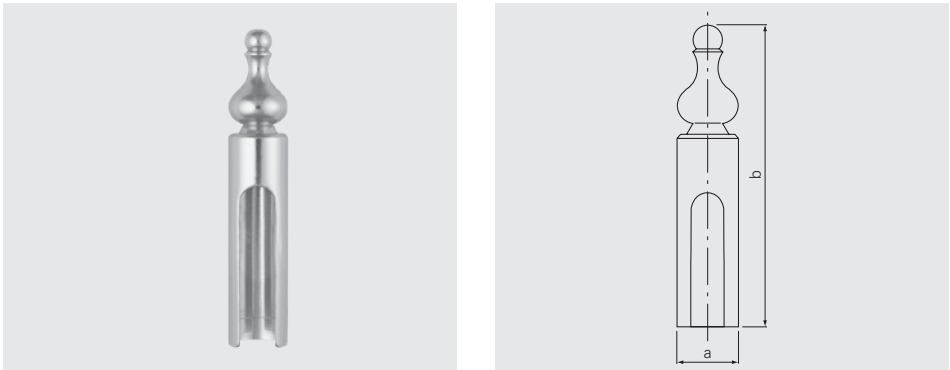
Range

Product	Packa- ging	Material	Surface	Corrosion resistance	Art. No
180T20RFC01AKC	50	Aluminium	Light Bronzed		997827
180T20RFC01ACA			Matt Chrome		936087
180T20RFC01ANL			Bright Nickel		946145
180T20RFC01ANO			Matt Nickel		946146
180T20RFC01AEL			Brassed		943775

Jigs/Accessories

Product		Page	Product		Page

180B-14R-C00



Application: 180B Ø 14 –Baroque caps

For adjustable hinges 11R Ø 14



Technical information

a	b
16.0	75.0

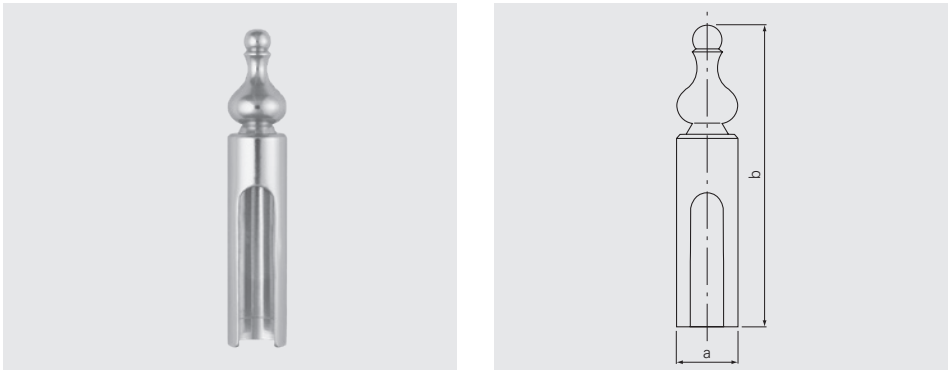
Range

Product	Packa- ging	Material	Surface	Corrosion resistance	Art. No
180B14RFC00AEL	50	Aluminium	Brassed		1555136

Jigs/Accessories

Product		Page	Product		Page

180B-15R-C16



Application: 180B Ø 15 –Baroque caps

For adjustable hinges 11R Ø 15x92



Technical information

a	b
17.0	89.0

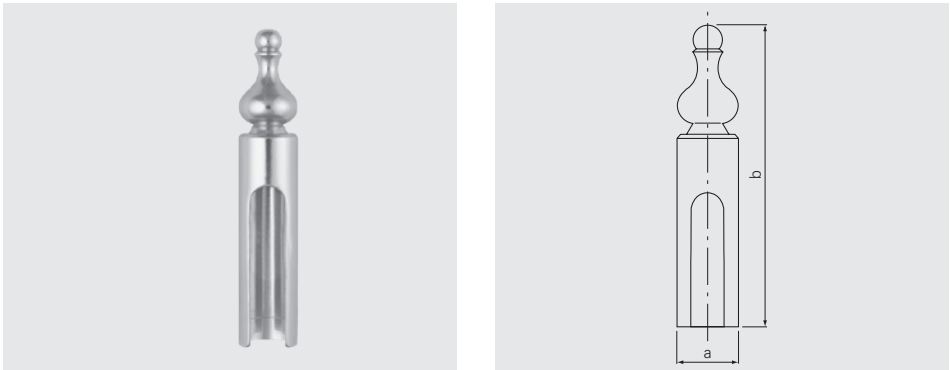
Range

Product	Packa- ging	Material	Surface	Corrosion resistance	Art. No
180B15RFC16AEL	50	Aluminium	Brassed		1489591

Jigs/Accessories

Product		Page	Product		Page

180B-15R-C01



Application: 180B Ø 15 –Baroque caps
For adjustable hinges 11R Ø 15x112



Technical information

a	b
17.0	99.0

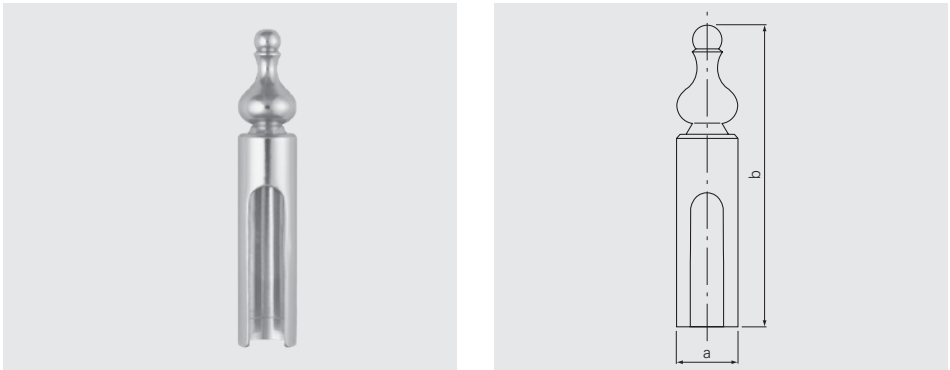
Range

Product	Packa- ging	Material	Surface	Corrosion resistance	Art. No
180B15RFC01AEL	50	Aluminium	Brassed		1569454

Jigs/Accessories

Product		Page	Product		Page

180B-20R-C00



Application: 180B Ø 20 –Baroque caps
For adjustable hinges 11R Ø 20x112



Technical information

a	b
22.0	99.0

Range

Product	Packa- ging	Material	Surface	Corrosion resistance	Art. No
180B20RFC00AEL	50	Aluminium	Brassed		1569536

Jigs/Accessories

Product		Page	Product		Page



Accessories and Jigs

Jigs/Accessories

Jigs

Product	Packa- ging	Applicazione	Description	Art. No	
BBOX/11411R00		11R Ø 14x80 with air gap	Rebated fitting set	1272405	
BBOX/11411R02		11R Ø 14x80 without air gap		1272450	
BBOX/11512R16		11R Ø 15x92 with air gap		1271965	
BBOX/11512R1		11R Ø 15x112 with air gap		1271978	
BBOX/12012R		11R Ø 20x112 with air gap		1271968	
BBOX/11512R18		11R Ø 15x92 without air gap		1272453	
BBOX/12012R05		11R Ø 20x112 without air gap		1272456	
BBOX/31411R00		11R and 12R	Flush fit fitting set	1272406	
BBOX/31512R16		11R Ø 14x80 with air gap		1272029	
BBOX/32012R		11R Ø 15x92 with air gap		1271995	
BBOX/31411R03		11R Ø 20x112 with air gap		1272451	
BBOX/31512R20		11R Ø 15x92 without air gap		1272455	
BPG13SR		11R Ø 14	6,7x148	21418	
BPG20SR		11R Ø 20	8,8 x 175	21428	
BPG16SR		11R Ø 15	7,7 x 165	21424	

