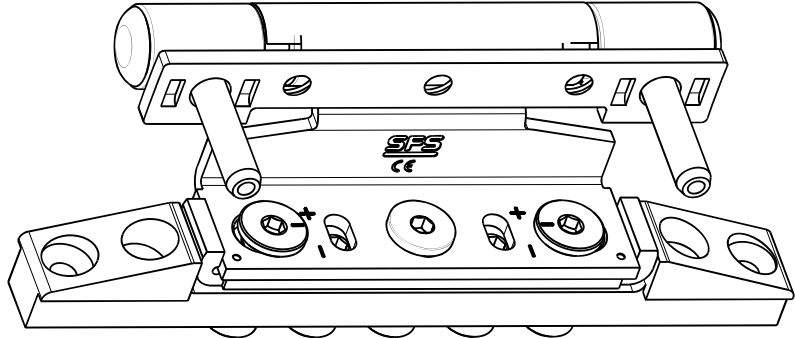
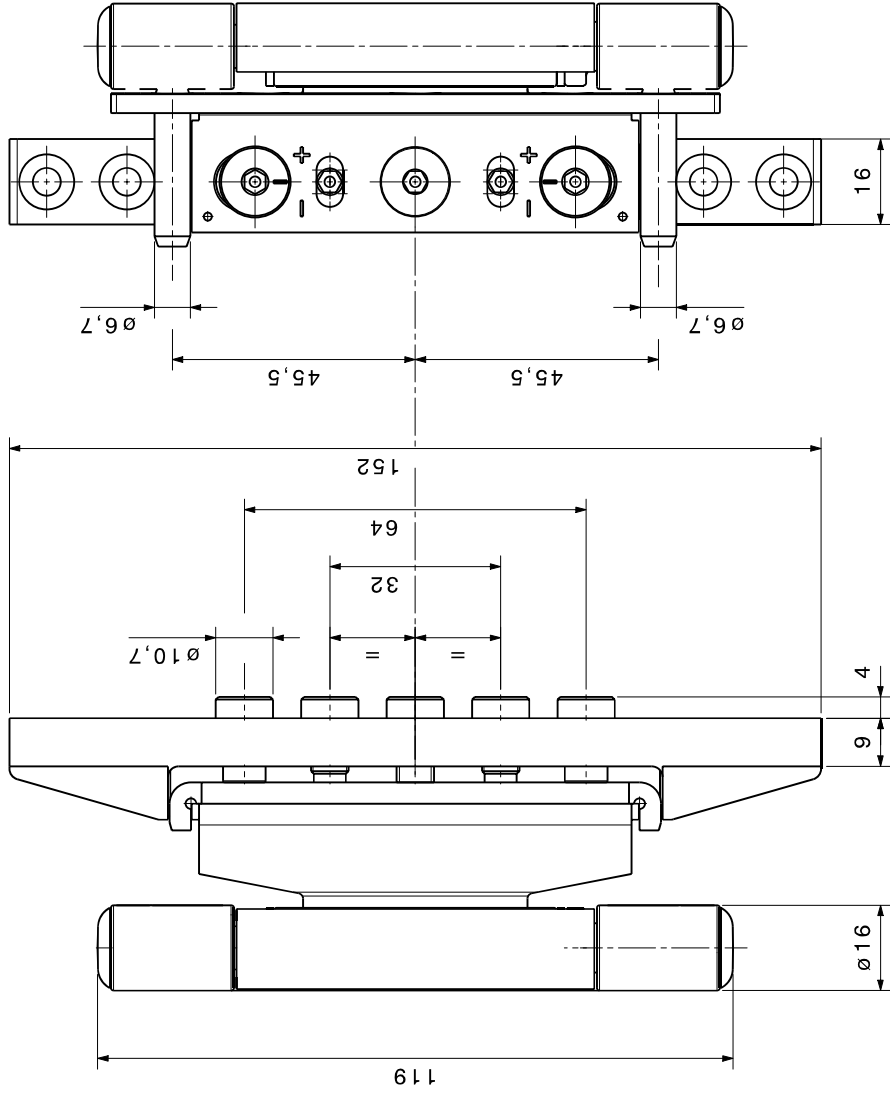
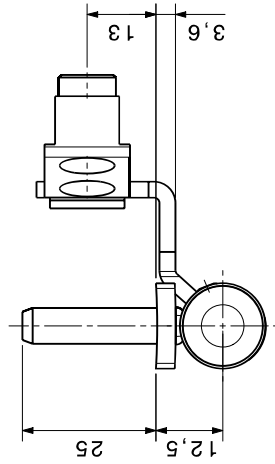



D3DN16

[illegible]

Materiale:		Classe.:	Superficie:	
DIN/EN/ISO:		Altra norma:		
Nota:		Toll.-fillet, prima della fin.:		
		Toll.-fillettatura dopo la fin.:		
Denom. SFS:		DXF D3DN16-Legno anta e telaio fresati		No. Dis. cliente:
Formato Disegno A3		Denom. cliente:		Code:
		Scala:	Documento-Key:	Revisione: -
		1549314 YCD 000 01		No. Modif.: 320746
		No. Mat:		1549314
Elaborato		CSTE	31.05.2017	
Verificato		CSTE	31.05.2017	
SFS intec				
IT-Pordenone				

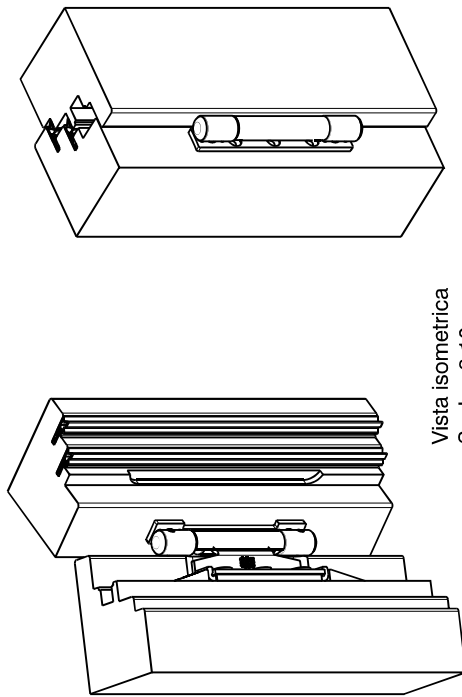
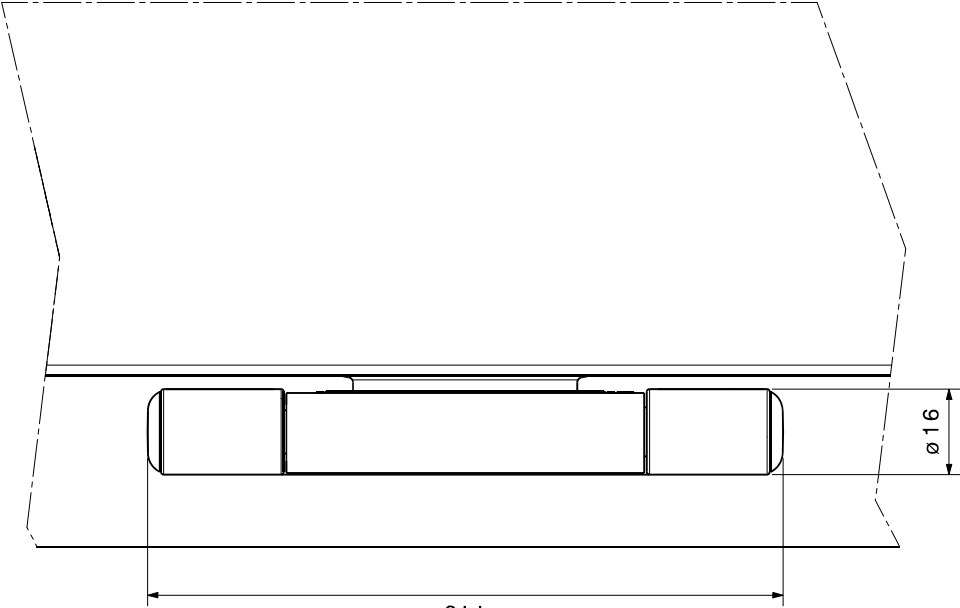
Tolleranze per ANGOLI / QUOTE		DIN/ISO 2768-mK		DIN/ISO 1302		DIN/ISO 13715	
Lunghezza del lato più corto	≤10°	>10-50	>50-120	>120-400	Campo	<0,5	>0,5-3
Tolleranza in gradi/minuti	±1°	±30'	±20'	±10'	Lunghezze	±0,1	±0,1
TOLL. in mm su 100mm di lunghezza	±1,8	±0,9	±0,6	±0,3	Raggi/smussi	±0,1	±0,2
Tolleranze per ANGOLI / QUOTE		DIN/ISO 2768-mK		DIN/ISO 1302		DIN/ISO 13715	
Lunghezza del lato più corto	≤10°	>10-50	>50-120	>120-400	Campo	<0,5	>0,5-3
Tolleranza in gradi/minuti	±1°	±30'	±20'	±10'	Lunghezze	±0,1	±0,1
TOLL. in mm su 100mm di lunghezza	±1,8	±0,9	±0,6	±0,3	Raggi/smussi	±0,1	±0,2

Questo disegno non deve essere
riprodotto oppure fotocopiato e
usato da terzi senza il nostro
permesso scritto.

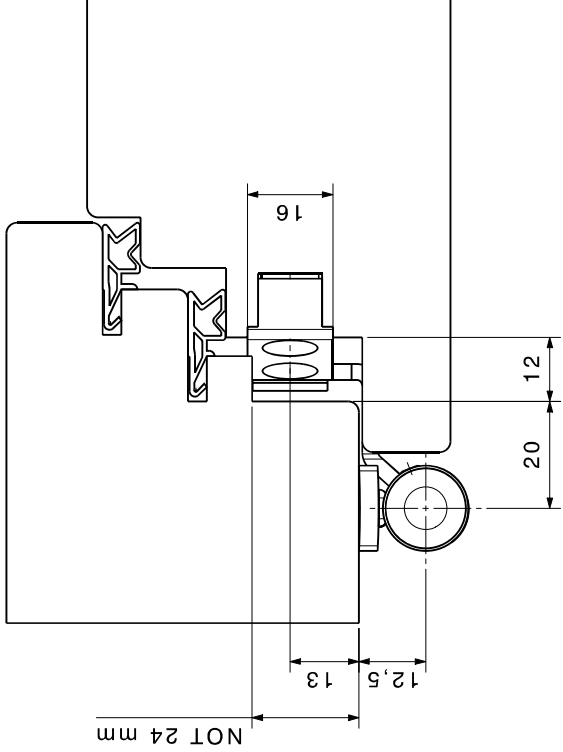


0.2	0.2	0.2	0.2	0.2	0.2	0.2	0.2
0.6	0.6	0.6	0.6	0.6	0.6	0.6	0.6
0.8	0.8	0.8	0.8	0.8	0.8	0.8	0.8
1.0	1.0	1.0	1.0	1.0	1.0	1.0	1.0
1.2	1.2	1.2	1.2	1.2	1.2	1.2	1.2
1.5	1.5	1.5	1.5	1.5	1.5	1.5	1.5
2.0	2.0	2.0	2.0	2.0	2.0	2.0	2.0
2.5	2.5	2.5	2.5	2.5	2.5	2.5	2.5
3.0	3.0	3.0	3.0	3.0	3.0	3.0	3.0
4.0	4.0	4.0	4.0	4.0	4.0	4.0	4.0
5.0	5.0	5.0	5.0	5.0	5.0	5.0	5.0
6.0	6.0	6.0	6.0	6.0	6.0	6.0	6.0
8.0	8.0	8.0	8.0	8.0	8.0	8.0	8.0
10.0	10.0	10.0	10.0	10.0	10.0	10.0	10.0
12.0	12.0	12.0	12.0	12.0	12.0	12.0	12.0
15.0	15.0	15.0	15.0	15.0	15.0	15.0	15.0
20.0	20.0	20.0	20.0	20.0	20.0	20.0	20.0
25.0	25.0	25.0	25.0	25.0	25.0	25.0	25.0
30.0	30.0	30.0	30.0	30.0	30.0	30.0	30.0
40.0	40.0	40.0	40.0	40.0	40.0	40.0	40.0
50.0	50.0	50.0	50.0	50.0	50.0	50.0	50.0
60.0	60.0	60.0	60.0	60.0	60.0	60.0	60.0
80.0	80.0	80.0	80.0	80.0	80.0	80.0	80.0
100.0	100.0	100.0	100.0	100.0	100.0	100.0	100.0
120.0	120.0	120.0	120.0	120.0	120.0	120.0	120.0
150.0	150.0	150.0	150.0	150.0	150.0	150.0	150.0
200.0	200.0	200.0	200.0	200.0	200.0	200.0	200.0
250.0	250.0	250.0	250.0	250.0	250.0	250.0	250.0
300.0	300.0	300.0	300.0	300.0	300.0	300.0	300.0
400.0	400.0	400.0	400.0	400.0	400.0	400.0	400.0
500.0	500.0	500.0	500.0	500.0	500.0	500.0	500.0
600.0	600.0	600.0	600.0	600.0	600.0	600.0	600.0
800.0	800.0	800.0	800.0	800.0	800.0	800.0	800.0
1000.0	1000.0	1000.0	1000.0	1000.0	1000.0	1000.0	1000.0

D3DN16



Vista isometrica
Scala: 3:10



Materiale:	Classe:	Superficie:
DIN/EN/ISO:	Altra norma:	Toll.-filet. prima della fin.:
Nota:		Toll.-filettatura dopo la fin.:
Denom. SFS:	DXF D3DN16-Legno anta e telaio fresati	No. Dis. cliente:
Formato Disegno A3	Denom. cliente:	Code:
SFS intec		Scala:
SFS intec IT-Pordenone		Documento-Key: 1549314 YCD 000 01
		Revisione: -
		No. Modif.: 320746
		No. Mat:
		Elaborato CSTE
		Verificato CSTE
		31.05.2017
		31.05.2017
		1549314